

ISO 9001:2015

Certificate of Registration

This is to Certify that
Quality Management System of

**ALNOOR COMPANY FOR OPERATION AND
FORMATION OF METALS**

ELHAY ELGADEID ABOU ELGHEIT OWNER THE FIRST SIDE CENTER
ALQANATIR ALKHAYRIYAH, ALQALYUBIA - EGYPT

has been assessed and found to conform to the requirements of
ISO 9001:2015
for the following scope :

OPERATION AND FORMATION OF METALS.

Certificate No	: 19IQDN86A	Issuance Date	: 04/11/2019
Initial Registration Date	: 04/11/2019	Date of Expiry	: 03/11/2022
1st Surve. Due	: 04/10/2020	2nd Surve. Due	: 04/10/2021


Director





AQC MIDDLE EAST FZE.

Head Office: El-1401 E. Amber Gem Tower, Sheikh Khalifa Bin Zayed Road, 2, Ajman, UAE. e-mail: info@aqcworld.com
(Validity of this certificate is subject to successful completion of surveillance audits on or before of the date. In case surveillance audits is not allowed to be conducted, this certificate shall be suspended/withdrawn).
Certificate Verification: Please Re-check the validity of certificate at <http://www.aqcworld.com/certificates.aspx> or www.aqcworld.com as Active Client.
 Certificate is the property of IAS- Middle East FZE and shall be returned immediately when demanded.

CERTIFICATE OF COMPLIANCE

Certificate Number	20190730-EX27754
Report Reference	EX27754-20190722
Issue Date	2019-JULY-30

Issued to: ALnour co. for forming & preparing metal
al hai algaded alkanater road
Alqlyubia EGYPT

This certificate confirms that representative samples of HANGERS, PIPE
SEE ADDENDUM PAGE FOR MODELS


Have been investigated by UL in accordance with the Standard(s) indicated on this Certificate.


Standard(s) for Safety: UL 203, Pipe Hanger Equipment for Fire Protection Service
Additional Information: See the UL Online Certifications Directory at <https://iq.ulprospector.com> for additional information.

This Certificate of Compliance does not provide authorization to apply the UL Mark. Only the UL Follow-Up Services Procedure provides authorization to apply the UL Mark.

Only those products bearing the UL Mark should be considered as being UL Certified and covered under UL's Follow-Up Services.

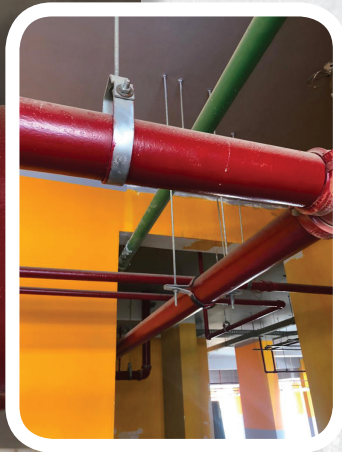
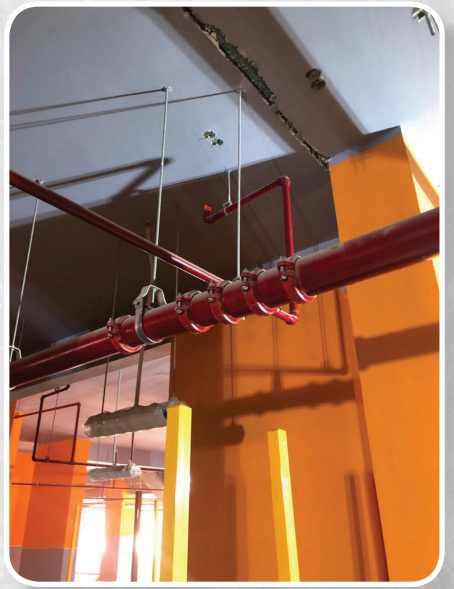
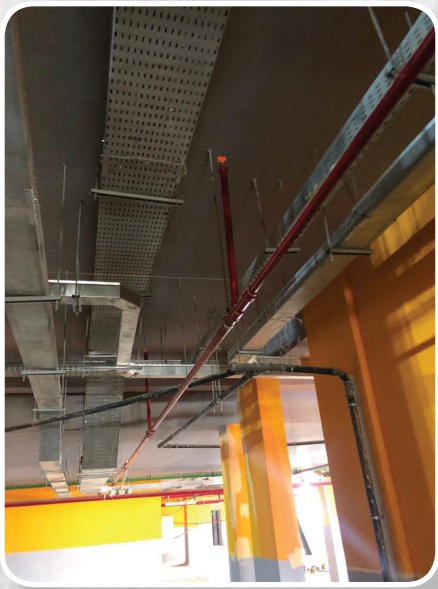
Look for the UL Certification Mark on the product.


 Bruce Matrenholz, Director North American Certification Program
 UL LLC
Any information and documentation involving UL Mark services are provided on behalf of UL LLC (UL) or any authorized licensee of UL. For questions, please contact a local UL Customer Service Representative at info@ul.com/about/locations





معمل الاختبارات الميكانيكية واختبار اللحام



بِسْمِ اللَّهِ الرَّحْمَنِ الرَّحِيمِ

مقدمة

النور لتشغيل وتشكيل المعادن واحدة من أهم الشركات فى هذا المجال مما جعلها تحوذ على ثقة عملائها الكرام منذ بدء العمل فى هذا المجال فى بداية الألفية الحالية وبرعاية تامة من مؤسسها م / صبرى محمود وأستلم راية الإجادة من بعده

م / ايمن صبرى

م / محمود صبرى

لان شركتنا تؤمن بأن الدقة والالتزام واستخدام الاساليب الصناعية الحديثة فى أدق تفاصيل العمل تؤدى الى التطور والجودة وارضاء العميل فقد حرصنا فى عملنا فى تشغيل وتشكيل المعادن من صاج والمونيوم ونحاس وحديد فى تطبيق كل عناصر ومعايير الجودة الشاملة ونحن إذ نفخر بوجود نخبة متميزة من المهندسين والفنيين المختصين بهذا المجال يقومون بتنظيم عملية الانتاج ومتابعتها وفقا لنظم تكنولوجية حديثة والإشراف على عملية الانتاج وذلك لضمان الدقة اللازمة فى مختلف مراحل الانتاج

وتفخر شركتنا بإنها تعد من أوائل الشركات فى مصر التى حصلت على شهادات عالمية ومحلية فى هذا المجال ومن ضمنها شهادة

١ - شهادة الايزو الامريكية

٢ - شهادة ال UL الامريكية

٣ - شهادة ال Fm الامريكية

٤ - شهادات من جامعة عين شمس

تقوم الشركة بأنتاج وتشغيل كثير من المنتجات وهذه بعضها على سبيل المثل وليس الحصر

١ - جميع انواع قفيز تعليق المواسير لسيستم (الحريق - التكيف المركزى - الصحى - الكهرباء)

٢ - اعمال الكيبيل ترية

٣ - كشافات انارة الشوارع

٤ - جميع انواع الخراطة

و تقوم ايضا الشركة بأعطاء الحلول السريعة لجميع مشاكل التركيب التى تواجه مقاولون التركيبات فى المواقع من خلال نخبة من مهندسيها المتخصصين فى هذا المجال ونتشرف بأن نكون شركاء النجاح لشركتكم الموقرة

والله ولي التوفيق.

وفيما يلي بعض الشركات التي تم التعامل معها خلال الفترة الماضية:

1	المقاولون العرب	16	كونسكورة
2	اوراسكوم	17	رواد الهندسة الحديثة
3	طلعت مصطفى	18	الغريالي
4	حسن علام للإنشاءات	19	البحر الاحمر للإنشاء
5	حسن علام تكنولوجي	20	CCC
6	النصر العامة	21	ليماك
7	جاما	22	ان كورب
8	السعداء	23	رؤي المتقدمة
9	دار الشروق	24	دار المعمار
10	دار العالمية	25	نافكو
11	الافق	26	امكو
12	ريد كون	27	البسمة
13	الخرافي	28	تو ويرز
14	المراسم	29	سوليا را
15	سيالك	30	نيو كوالر
		31	طيبة

• كما تشرفت شركة النور بالاعتماد من قبل المكاتب الاستشارية التالية:

1	المجموعة الاستشارية - شاکر	6	DAR
2	جماعة المهندسين الاستشاريين ECG	7	EHAF
3	رافت ميلر	8	المستشارون المتحدون AC
4	الجبالي EMG	9	مكتب المهندس حسين صبور SABBOUR
5	Consultants PACER	10	GWWS

• وهذه بعض المشاريع التي ساهمت فيها شركتنا بمنتجاتها المتميزة:

1	القرية الزكية	30	قصر رئاسة الجمهورية - العاصمة
2	مطار القاهرة الدولي صالة 2،3 (وفندق المطار - ايروتيل)	31	فندق الماسة - العلمين - العاصمة الادارية
3	مطار برنيس الحربى	32	مطابع البنك المركزي العاصمة الادارية
4	مطار برج العرب	33	الكيان العسكري بالعاصمة الادارية الجديدة
5	مشروعات اسكان البيت العائلي	34	ابراج - R5 العاصمة الادارية
6	ابراج موبينيل العراق	35	مباني حي الوزارات العاصمة الادارية
7	مبنى شركة تون جاز	36	مبنى الاوبرا العاصمة الادارية
8	فندق فور سيزون نيل بلازا - القاهرة	37	مبنى فندق الماسة العاصمة الادارية
9	فندق سان ستيفانو- الاسكندرية	38	مبنى البرلمان العاصمة الادارية
10	بنك الاسكان والتعمير القاهرة الجديدة	39	مجلس الشورى - العاصمة الادارية
11	تجديدات برج القاهرة	40	النهر الاخضر العاصمة الادارية
12	القناة الفضائية للأزهر الشريف	41	محطات تكيف المركزي جنوب 110 - العاصمة
13	كلية طب الازهر	42	بنك CIB - العاصمة الادارية
14	مشروع الديار القطرية - سانت ريجينز	43	البنك المركزي - العاصمة الادارية
15	البنك الاهلي النيل بلازا	44	البنك الاهلي المصري العاصمة الادارية
16	مطار برنيس	45	بنك فيصل الاسلامي العاصمة الادارية
17	ميناء دبي العالمي - السخنة	46	بنك قناة لسويس العاصمة الادارية
18	بئر عريضة	47	ابراج العاصمة الادارية
19	مطار شرم الشيخ	48	جامعة الملك سلمان
20	ابراج مراكز 6 اكتوبر	49	مبنى رئاسة الجمهورية - العلمين
21	مشروع مفيدا	50	مجلس الوزراء - العالمين
22	هيد بارك	51	جامعة العلمين
23	مصنع بروكتر اند جامبل مصر	52	المدينة التراثية - العلمين
24	انفاق بورسعيد	53	الحى اللاتيني - العلمين
25	مبنى جامعة الدول العربية القاهرة	54	فندق الماسة - العلمين
26	مشروع بروج	55	الأبراج الشاطئية - العلمين
27	مبنى البريد المصري	56	مشروع NN1
28	مترو الانفاق المرحلة الرابعة	57	مشروع NN2
29	المتحف المصري الكبير	58	مشروع سراي - القاهرة الجديدة

ودائما تأمل شركة النور بكسب ثقة العميل وتلبية جميع إحتياجات المشاريع

Table of Content

Part no.	Page	Part No.	Page
Introduction	5	S8040.....	45
Hangers:		S8050.....	46
S4900.....	12	S8060.....	47
S5000.....	13	S8070.....	48
S5010.....	14	S8080.....	49
S5020.....	15	S8090.....	50
S5030.....	16	S9000.....	51
S5040.....	17	S9010.....	52
S5050.....	18	S9020.....	53
S5060.....	18	Bracket:	
S5070.....	18	S9030.....	56
Calmp:		S9040.....	56
S5080.....	20	S9050.....	57
S5090.....	20	S9060.....	57
S6000.....	21	S9070.....	58
S6010.....	21	S9080.....	59
S6020.....	22	S9090.....	60
S6030.....	23	S10000.....	61
S6040.....	24	S10010.....	61
S6050.....	25	S10020.....	62
S6060.....	26	Bolts:	
S6070.....	26	S10030.....	64
S6080.....	27	S10040.....	65
S6090.....	28	S10050.....	66
S7000.....	29	S10060.....	67
S7010.....	30	S10070.....	67
S7020.....	31	S10090.....	68
S7030.....	31	Drainage:	
S7040.....	32	S10100.....	70
S7050.....	33	ShowerDrain.....	71
Strap:		Trench Drain.....	71
S7060.....	36	Cable Tray:	
S7070.....	37	SC10110.....	74
S7080.....	38	SC10120.....	74
Pipe Roller:		SC10130.....	75
S7090.....	40	SC10140.....	75
S8000.....	41	SC10150.....	76
S8010.....	42	SC10160.....	76
S8020.....	43	SC10170.....	77
S8030.....	44	SC10180.....	77

Table of Content

Part No.	Page
SC10190.....	78
SC10200.....	78
SC10210.....	79
SC10220.....	79
SC10230.....	80
SC10240.....	80
Light:	
400-250-125.....	82-83

Hanger

Clamp

Strap

pipe
Roller

Bracket

Bolts

Drainage

Cable
Tray

Lights

Notes



Hangers

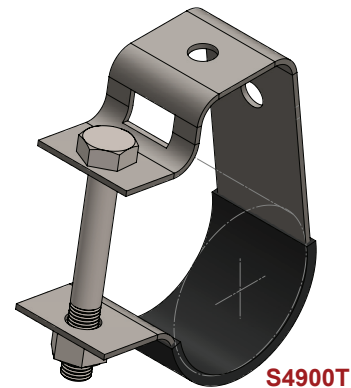
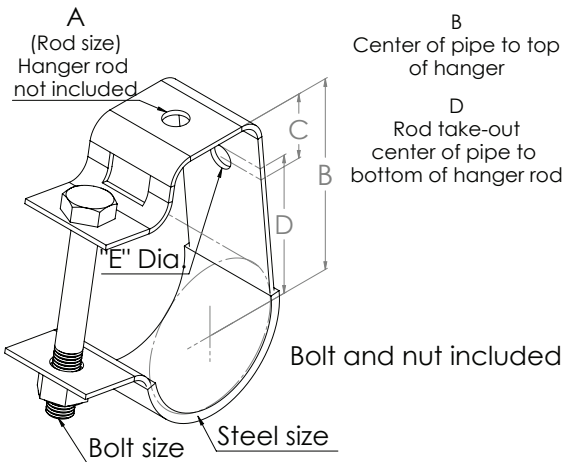
Hanger





Adjustable "J" Hanger

Material: Steel
Finish: Electro-Plated or Hot Dip Galvanized



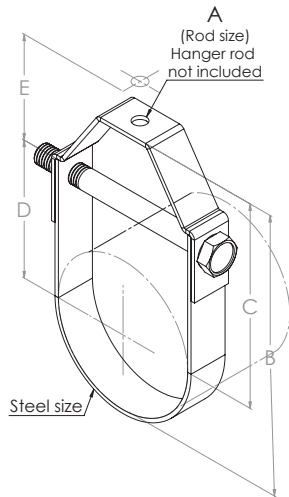
Part No.	Nominal Pipe Size	Rodsize "A"	Dimension (mm)				Dia "E"	Bolt Size	Design Load (Kg)
			"B"	"C"	Rod TakeOut "D"				
S4900 1/2"	15	8	53	25	43	10	6 × 2.5"	9	
S4900 3/4"	20	8	60	25	46	10	6 × 2.5"	10	
S4900 1"	25	8	66	25	49	10	6 × 2.75"	10	
S4900 1 1/4"	32	10	71	25	50	10	6 × 3"	12	
S4900 1 1/2"	40	10	78	25	54	10	6 × 3.25"	13	
S4900 2"	50	10	89	25	59	10	6 × 3.5"	14	
S4900 2 1/2"	65	12	113	25	76	14	10 × 4.5"	32	
S4900 3"	80	12	124	25	79	14	10 × 5"	35	
S4900 4"	100	12	155	32	98	14	10 × 6.5"	63	
S4900 5"	125	14	171	38	100	14	10 × 7.5"	75	
S4900 6"	150	16	197	30	113	14	10 × 8.5"	103	
S4900 8"	200	16	235	25	125	14	10 × 10.5"	151	



Standard Clevis Hanger

Material: Steel
Finish: Electro-Plated or
Hot Dip Galvanized

Hanger



- A (Rod size)
Hanger rod not included
- B Bottom of pipe to top of hanger.
- C Center of pipe to top of hanger.
- D Rod take-out Center of pipe to bottom of hanger rod.
- E Minimum thread length of hanger rod.
- F Adjustment top of cross bolt to bottom of hanger rod nut inside the hanger.



S5000T

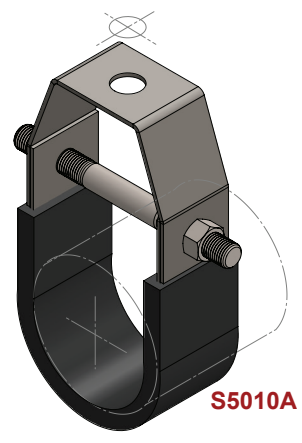
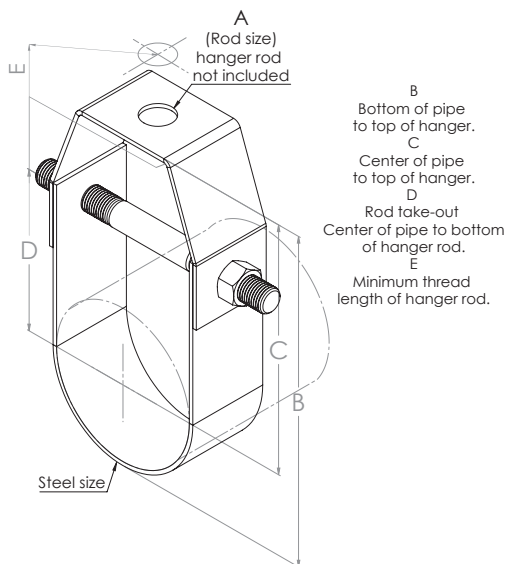
Available with Plastic Coating

Part No.	Normal Pipe Size	Rod Size	"B"	"C"	Rod Takeout "D"	"E"	Design Load (Kg)
S5000 ½"	15	10	54	43	24	64	11
S5000 ¾"	20	10	62	48	29	64	13
S5000 1"	25	10	71	54	35	64	16
S5000 1¼"	32	10	87	65	46	64	18
S5000 1½"	40	10	102	76	57	64	19
S5000 2"	50	10	114	82	64	64	23
S5000 2½"	65	12	141	102	78	64	41
S5000 3"	80	12	171	124	100	64	49
S5000 4"	100	14	198	140	111	64	64
S5000 5"	125	14	230	156	127	64	98
S5000 6"	150	18	265	176	145	76	145
S5000 8"	200	18	324	213	181	89	220
S5000 10"	250	18	387	249	213	89	384
S5000 12"	300	22	448	284	246	89	491
S5000 14"	350	22	497	317	270	102	650
S5000 16"	400	25	544	338	294	102	998
S5000 18"	450	25	635	403	360	114	1134
S5000 20"	500	30	699	441	422	127	1995
S5000 24"	600	30	806	499	473	127	2268
S5000 30"	750	30	987	603	578	127	2994



Clevis Hanger

Material: Steel
Standard Finish: Copper



Available with Plastic Coating

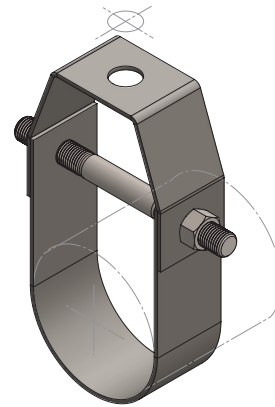
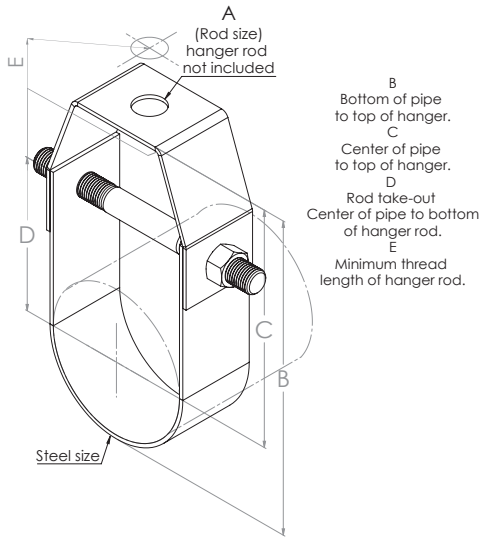
Part No.	Nominal Tubing Size	Rod Size "A"	"B"	"C"	Rod takeout "D"	"E"	Design Load (Kg)
S5010 ½"	15	10	57	49	29	64	5
S5010 ¾"	20	10	49	38	29	64	5
S5010 1"	25	10	59	44	33	64	10
S5010 1¼"	32	10	70	52	40	64	10
S5010 1½"	40	10	84	62	52	64	13
S5010 2"	50	10	114	87	86	64	15
S5010 2½"	65	12	145	114	100	64	35
S5010 3"	80	12	132	92	102	64	39
S5010 4"	100	12	187	134	111	64	50



Clevis Hanger

Material: Stainless Type 304

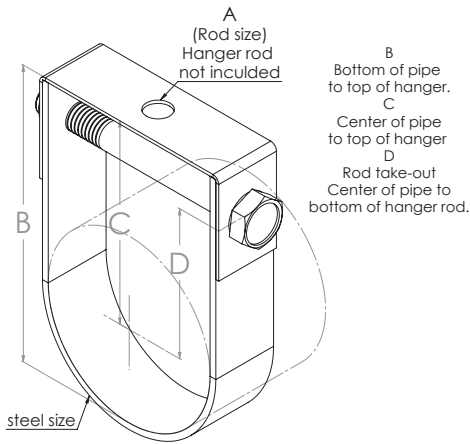
Hanger



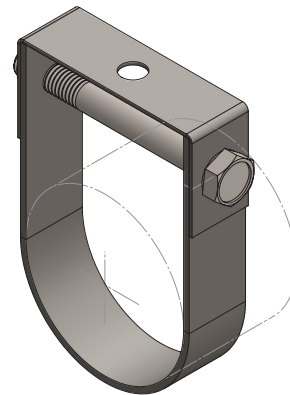
Part No.	Size	Rod Size "A"	"B"	"C"	Rod take out "D"	"E"	Design Load (Kg)
S5020 ½"	15	10	54	25	24	64	16
S5020 ¾"	20	10	62	48	25	64	18
S5020 1"	25	10	71	54	33	64	20
S5020 1¼"	32	10	87	65	44	64	21
S5020 1½"	40	10	102	76	54	64	25
S5020 2"	50	10	124	94	75	64	28
S5020 2½"	65	13	156	119	97	76	64
S5020 3"	90	13	167	121	98	76	66
S5020 4"	100	16	198	141	111	89	91
S5020 5"	125	16	229	157	129	89	110
S5020 6"	150	19	257	173	143	102	151
S5020 8"	200	19	321	211	173	108	228
S5020 10"	250	22	387	251	210	114	407
S5020 12"	300	22	446	284	245	120	500



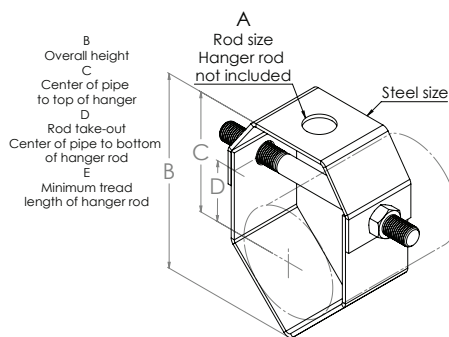
Clevis Hanger Vee Bottom Clevis Hanger



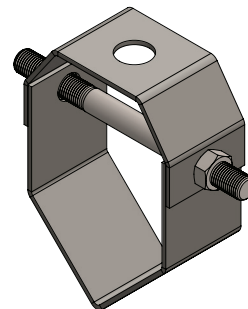
Material: Steel
Standard Finish: Electro-Plated or Hot Dip Galvanized



Part No.	Nominal Tube Size	Rod Size "A"	"B"	"C"	Rod take-out "D"	Design Load (Kg)
S5030 2"	50	10	96	67	47	23
S5030 2½"	65	12	117	81	55	52
S5030 3"	80	12	135	90	66	60
S5030 4"	100	16	165	108	79	81
S5030 5"	125	16	198	127	98	112
S5030 6"	150	16	230	145	113	150
S5030 8"	200	16	289	178	148	232



Material: Steel
Standard Finish: Electro-Plated or Hot Dip Galvanized



Part No.	Nominal Tube Size	Rod Size "A"	"B"	"C"	Rod takeout "D"	"E"	Design Load (Kg)
S5040 1½"	40	10	127	87	79	30	23
S5040 2"	50	10	151	103	84	41	27
S5040 3"	80	12	198	130	108	50	47
S5040 4"	100	16	238	152	122	55	65
S5040 6"	152	16	303	174	129	63	123

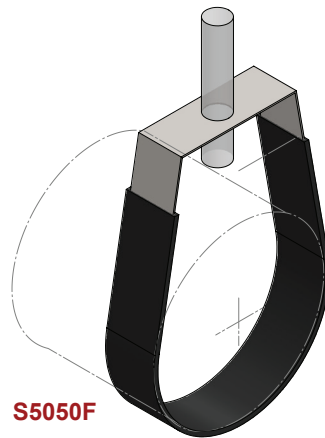
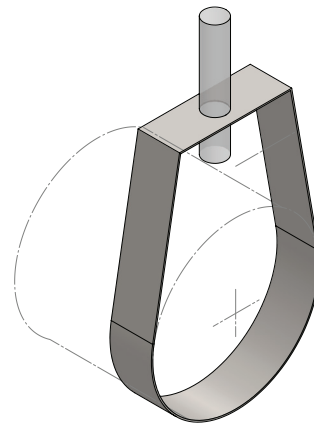
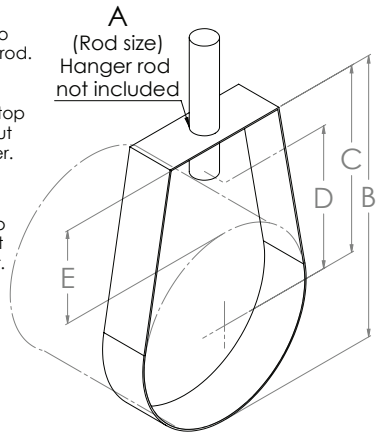


Sprinkler Hanger

Material: Steel Standard or (Stainless type 304 available)
Finish: Electro-Plated or Hot Dip Galvanized

Hanger

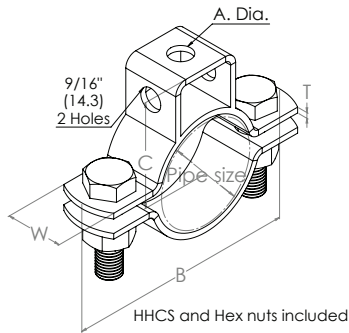
- B Bottom of pipe to top of hanger.
- C Center of pipe to bottom of hanger rod.
- D Rod take-out Center of pipe to top of hanger rod nut inside the hanger.
- E Adjustment Top of pipe to top of hanger rod nut inside the hanger.



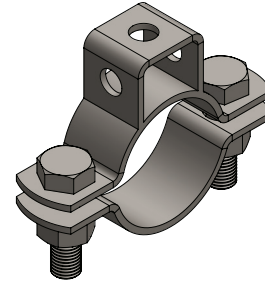
S5050F

Part No.	Normal Size	Rod take-out "A"	"B"	"C"	Rod take-out "D"	"E"	Design Load (Kg)
S5050 ½"	15	8	66	55	36	32	5
S5050 ¾"	20	8	66	52	33	25	5
S5050 1"	25	8	68	52	33	17	5
S5050 1¼"	32	8	87	65	46	32	5
S5050 1½"	40	8	93	70	51	30	7
S5050 2"	50	10	106	76	57	30	10
S5050 2½"	65	10	124	87	62	30	13
S5050 3"	80	10	152	108	82	41	19
S5050 4"	100	12	171	114	82	35	37
S5050 5"	125	12	197	127	120	32	45
S5050 6"	150	14	254	170	132	54	73
S5050 8"	200	16	301	192	173	51	118

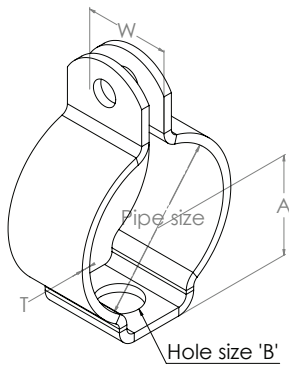
Suspension Rod Pipe Hanger Hanger



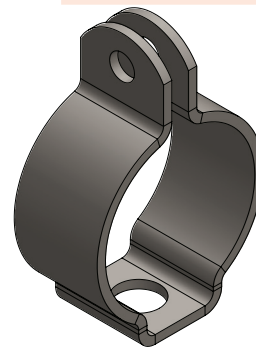
Material: Steel
Standard Finish: Electro-Plated Hot Dip Galvanized



Part No.	Pipe Size	"A"	"B"	"C"	"W"	Design Load (Kg)
S5060 ¾"	20	11	84	55	25	21
S5060 1"	25	11	95	59	25	23
S5060 1¼"	32	11	102	64	25	24
S5060 1½"	40	11	110	68	25	25
S5060 2"	50	11	140	84	25	61
S5060 2½"	65	14	160	89	25	71
S5060 3"	80	14	178	98	25	76
S5060 4"	100	14	219	111	30	122
S5060 5"	125	17	247	132	30	140
S5060 6"	150	17	295	154	40	250
S5060 8"	200	20	352	181	40	300

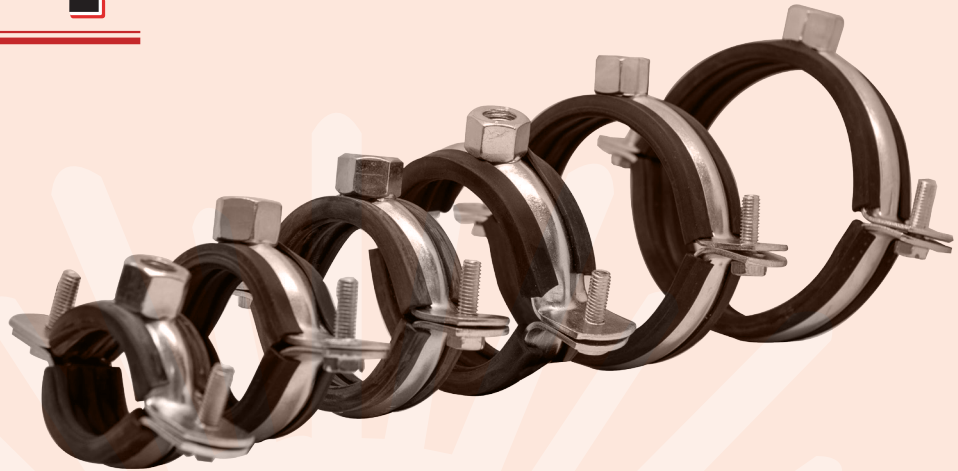


Material: Steel
Standard Finish: Electro-Plated Hot Dip Galvanized

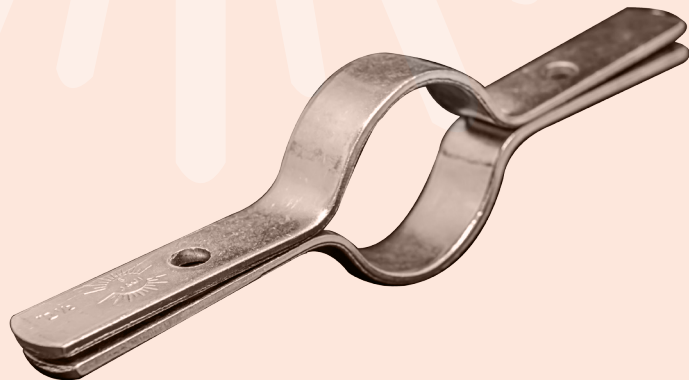
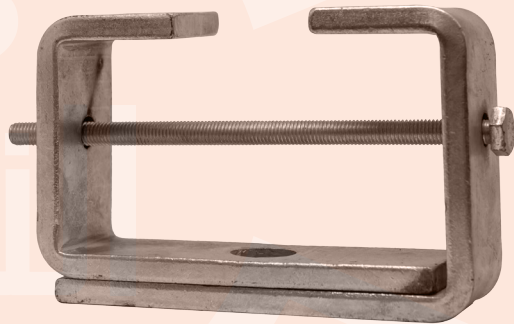
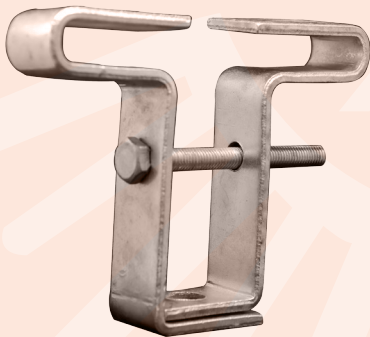


Part No.	Pipe Size	"A"	"B"	"W"	Design Load (Kg)
S5070 ½"	15	23	8	20	3
S5070 ¾"	20	25	8	20	3
S5070 1"	25	32	8	20	4
S5070 1¼"	32	36	8	25	5
S5070 1½"	40	41	10	25	8
S5070 2"	50	48	10	30	11
S5070 2½"	65	52	10	30	12
S5070 3"	80	64	10	30	15
S5070 4"	100	89	10	30	18

Clamp



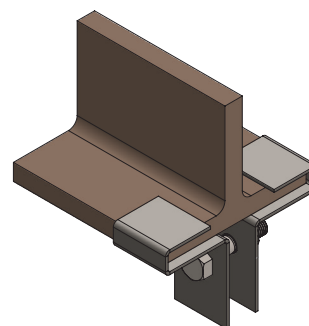
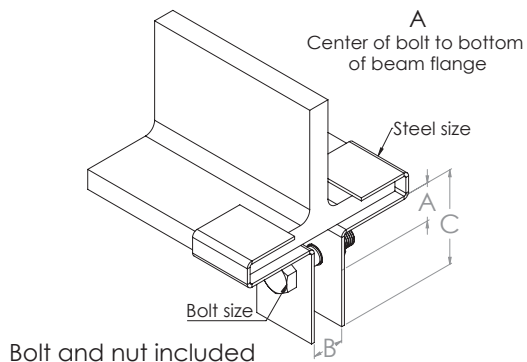
Clamp



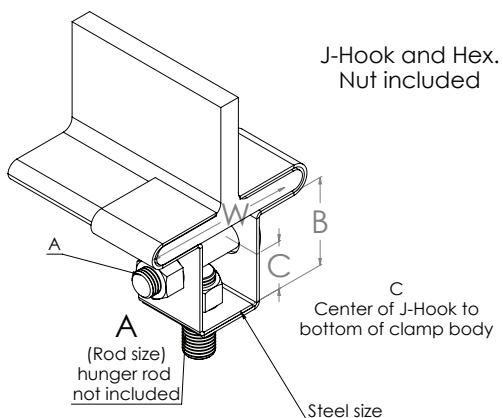


Steel Beam Clamp

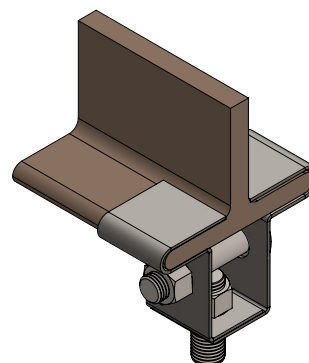
Material: Steel
Standard Finish: Electro-Plated Hot Dip Galvanized



Part No.	Bolt Size	Dimension (mm)			Design Load (Kg)
		"A"	"B"	"C"	
S5080 2	12	35	15	54	25
S5080 4	12	47	22	76	32
S5080 6	16	63	29	108	45



Material: Steel
Standard Finish: Electro-Plated Hot Dip Galvanized

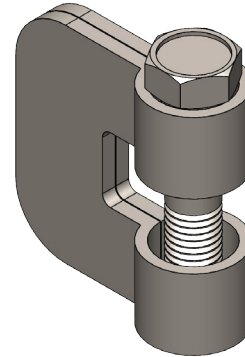
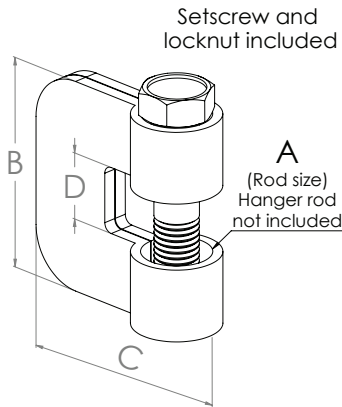


Part No.	Rod Size "A"	Dimension (mm)			Wt/C (Kg)
		"B"	"C"		
S5090 3/8"	10	70	46	54	
S5090 1/2"	13	70	44	73	
S5090 5/8"	16	76	44	98	
S5090 3/4"	20	86	47	200	



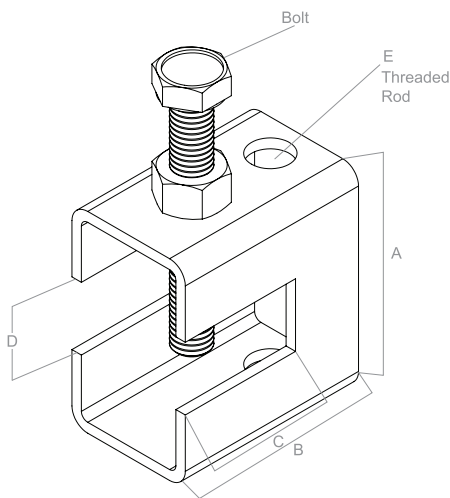
C-Clamp

Material: Steel
Standard Finish: Electro-Plated Hot Dip Galvanized

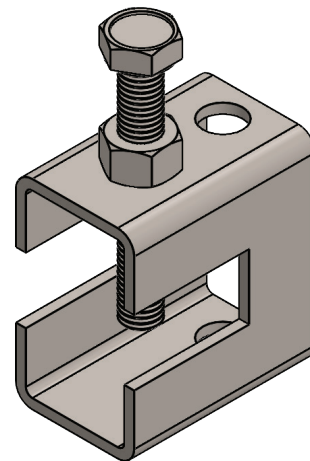


Clamp

Part No.	"A"	"B"	"C"	"D"	Design Load (Kg)
S6000	8	60	60	20	18
S6000	10	60	60	20	20
S6000	12	60	57	20	27
S6000	16	69	57	20	32
S6000	20	76	82	25	83



Material: Steel
Standard Finish: Electro-Plated Hot Dip Galvanized

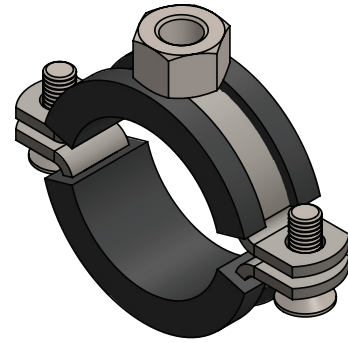
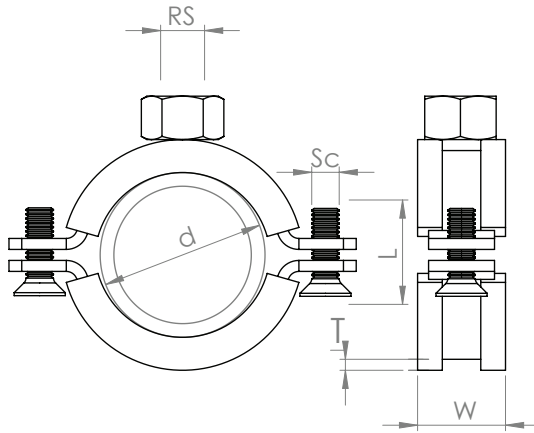


Part No.	"A"	"B"	"C"	"D"	Treaded Rod "E"	Bolt Size	Desgin Load (kg)
S6010	88	103	58	31	8	12	570
S6010	88	103	58	31	10	12	950
S6010	88	103	58	31	12	12	1300
S6010	88	103	58	31	16	12	1450



Rubber Lind Clamp

Material: Steel
Standard Finish: Electro-Plated Hot Dip Galvanized



Part No.	Dimension "D"	RS	SC × L
S6020 3/8"	15-19	10	6 × 20
S6020 1/2"	20-24	10	6 × 20
S6020 3/4"	25-30	10	6 × 20
S6020 1"	32-37	10	6 × 20
S6020 1 1/4"	40-49	10	6 × 20
S6020 1 1/2"	48-59	10	6 × 20
S6020 2"	59-68	10	6 × 20
S6020 2 1/2"	75-80	10	6 × 20
S6020 3"	89-91	10	6 × 20
S6020 4"	108-102	10	6 × 20
S6020 5"	135-141	10	6 × 30
S6020 6"	156-168	10	6 × 30
S6020 8"	216-220	12	8 × 30

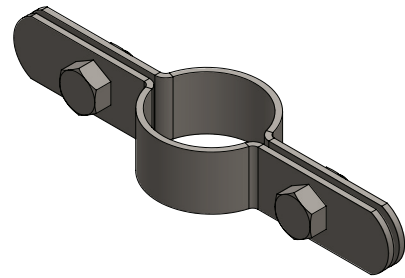
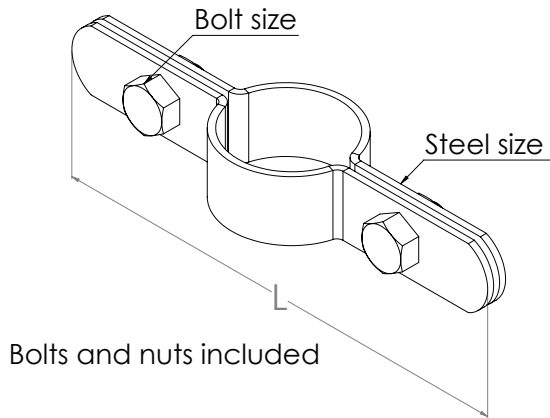


Ruler Calmp: Sizes according to Customer requirement



Riser Clamp

Material: Steel (Stainless Steel Available)
Standard Finish: Electro-Plated



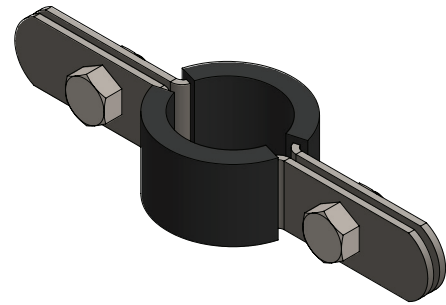
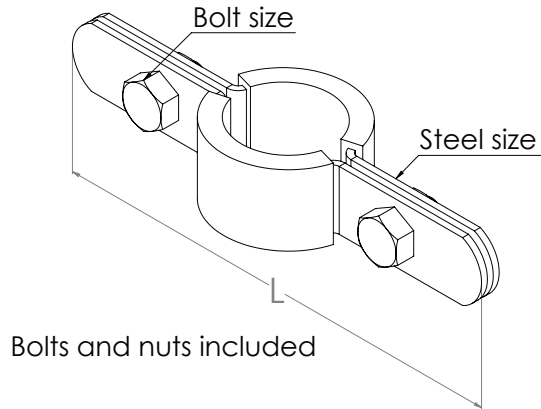
Clamp

Part No.	Nominal Pipe Size	"L"	Bolt Size	Design Load (Kg)
S6030 ½"	15	228	10	46
S6030 ¾"	20	235	10	48
S6030 1"	25	243	10	49
S6030 1¼"	32	254	10	51
S6030 1½"	40	262	10	51
S6030 2"	50	273	10	75
S6030 2½"	65	286	10	81
S6030 3"	80	303	10	88
S6030 4"	100	327	12	103
S6030 5"	125	355	12	217
S016 6"	150	382	12	238
S6030 8"	200	438	14	434
S6030 10"	250	493	14	450
S6030 12"	300	550	14	700
S6030 14"	350	596	16	720
S6030 16"	400	650	16	1285
S6030 18"	450	701	16	1320
S6030 20"	500	762	16	1550
S6030 24"	600	850	20	1800
S6030 30"	750	1016	20	2700



Coated Clevis Hanger

Material: Steel
Finish: Electro-Plated with plastic coating

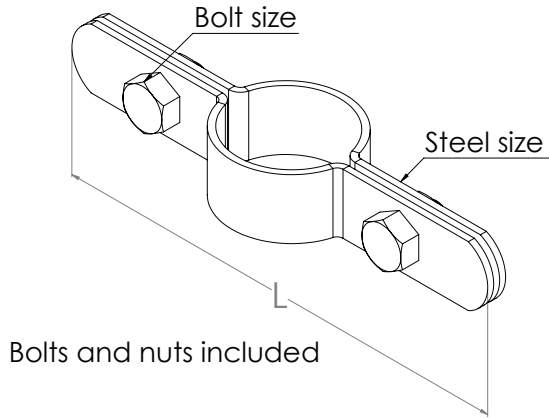


Part No.	Nominal Pipe Size	"L"	Bolt Size	Design Load (Kg)
S6040 ½"	15	229	10	57
S6040 ¾"	20	230	10	58
S6040 1"	25	243	10	64
S6040 1¼"	32	254	10	86
S6040 1½"	40	262	10	89
S6040 2"	50	273	10	91
S6040 2½"	65	286	10	92
S6040 3"	80	303	10	100
S6040 4"	100	327	12	130
S6040 5"	125	355	12	200
S6040 6"	150	384	12	220
S6040 8"	200	465	16	434
S6040 10"	250	514	16	499
S6040 12"	300	560	16	700
S6040 14"	350	597	16	720
S6040 16"	400	651	20	1342
S6040 18"	450	702	20	1467
S6040 20"	500	762	20	1618

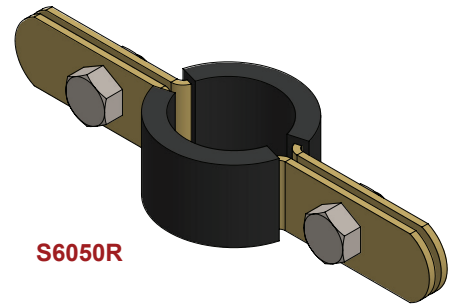


Riser Clamp

Material: Steel
Finish: Dura-Copper (Available with Plastic Coating)



Clamp



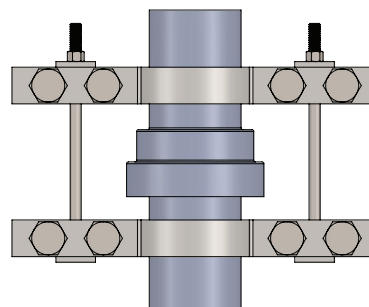
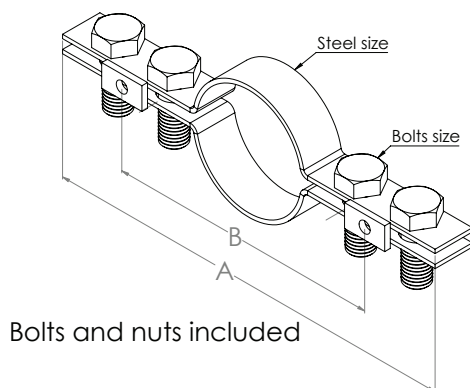
S6050R

Part No.	Nominal Tubing Size	"L"	Bolt Size	Design Load (Kg)
S6050 ½"	15	227	6 × 25	30
S6050 ¾"	20	234.9	6 × 25	33
S6050 1"	25	236	6 × 25	33
S6050 1¼"	32	242	6 × 25	34
S6050 1½"	40	250	6 × 25	50
S6050 2"	50	265	6 × 25	54
S6050 2½"	65	277	6 × 25	56
S6050 3"	80	290	6 × 25	60
S6050 4"	100	317	6 × 25	62

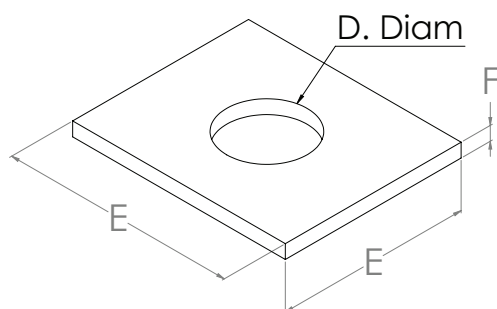


Four Bolt Underground Clamp Washer

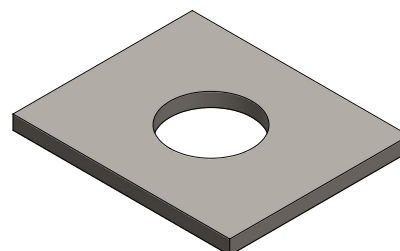
Material: Steel
Standard Finish: Electro-Plated



Part No.	Nominal Pipe Size	"A"	"B"	Bolt Size (mm)	Design Load (Kg)
S6060 4"	100	366	244	16	425
S6060 6"	150	428	301	16	546
S6060 8"	200	486	358	16	900
S6060 10"	250	542	422	16	1050
S6060 12"	300	638	498	20	1400
S6060 14"	350	717	565	20	2000
S6060 16"	400	816	666	20	3001
S6060 18"	450	890	714	20	3410
S6060 20"	500	958	774	22	4170
S6060 24"	600	1123	914	22	5800



Material: Steel
Standard Finish: Electro-Plated

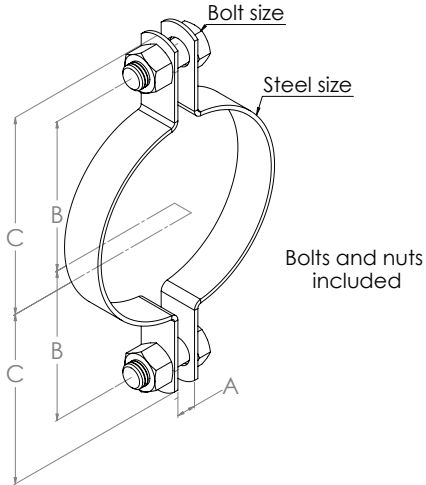


Part No.	Tie Rod Size	For Use With Pipe Size	Dia "D"	"E"	Design Load (Kg)
S6070 ¾"	16	100-200	22	76	50
S6070 1"	25	250-300	29	89	65
S6070 1½"	25	350-400	32	89	80
S6070 1¾"	30	450	35	89	100
S6070 1¼"	30	500	38	89	100
S6070 1½"	30	600	41	89	100



Standard Pipe Clamp

Material: Steel (Stainless Steel Available)
Standard Finish: Electro-Plated or Hot-Dip Galvanized



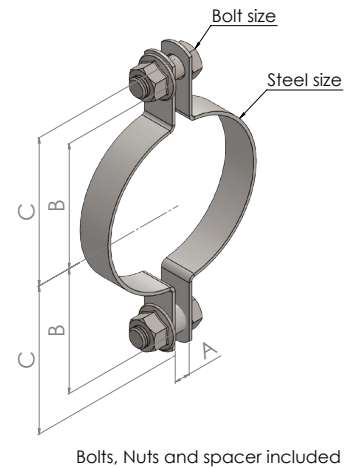
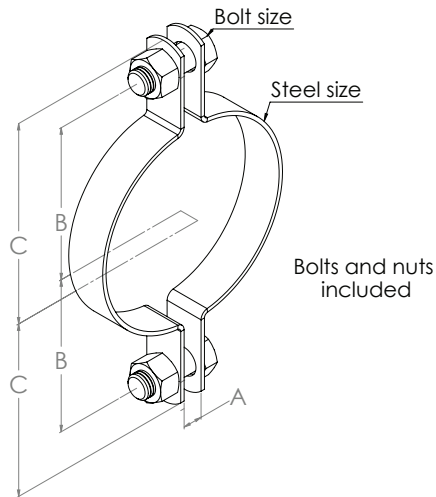
Clamp

Part No.	Nominal Pipe Size	"A"	"B"	"C"	Bolt Size (mm)	Design Load (Kg)
S6080 ½"	15	10	24	40	8	12
S6080 ¾"	20	11	27	42	8	13
S6080 1"	25	11	33	47	8	14
S6080 1¼"	32	11	36	51	8	17
S6080 1½"	40	15	42	56	8	18
S6080 2"	50	12	54	70	13	50
S6080 2½"	65	16	67	83	13	54
S6080 3"	80	16	74	91	13	60
S6080 4"	100	19	90	110	16	100
S6080 5"	125	19	104	124	16	110
S6080 6"	150	22	125	147	16	180
S6080 8"	200	25	154	176	20	280
S6080 10"	250	25	187	216	22	600
S6080 12"	300	25	214	243	22	690
S6080 14"	350	28	234	270	22	910
S6080 16"	400	28	260	295	22	1000
S6080 18"	450	31	301	336	25	1350
S6080 20"	500	34	323	358	25	1501
S6080 24"	600	41	371	406	25	2150



Heavy Duty Pipe Clamp

Material: Steel
Standard Finish: Electro-Plated

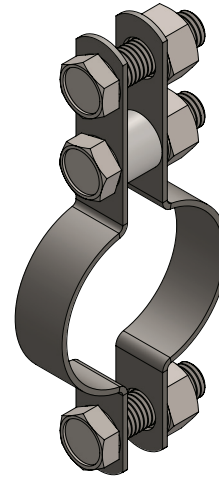
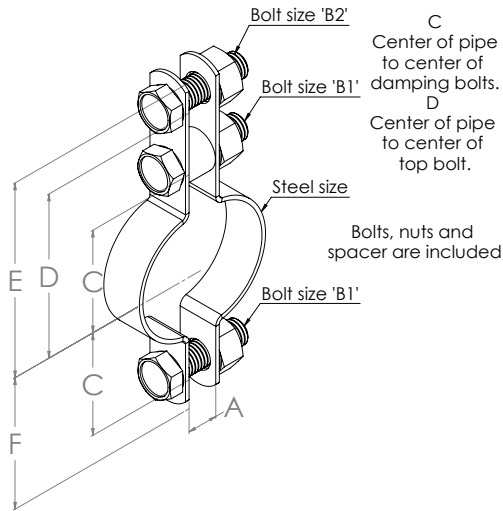


Part No.	Nominal Pipe Size	"A"	"B"	"C"	Bolt Size	Design Load (Kg)
S6090 3"	80	25	79	102	14	170
S6090 4"	100	25	95	124	16	210
S6090 5"	125	25	111	140	16	280
S6090 6"	150	28	133	168	20	500
S6090 8"	200	28	158	194	20	610
S6090 10"	250	30	195	230	22	950
S6090 12"	300	40	231	273	22	1550
S6090 14"	350	40	250	298	22	2000
S6090 16"	400	40	279	327	25	2400
S6090 18"	450	76	368	470	25	5600
S6090 20"	500	76	406	508	30	6000
S6090 24"	600	80	469	584	30	9000
S6090 30"	750	88	571	699	30	16000



Double Bolt Pipe Clamp

Material: Steel (Stainless Steel Available)
Standard Finish: Electro-Plated or Hot-Dip Galvanized



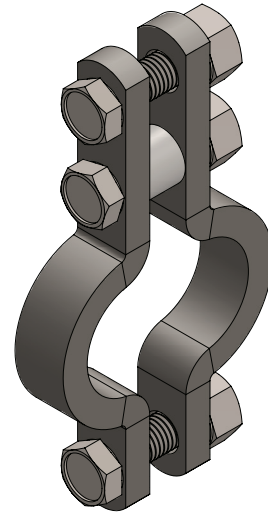
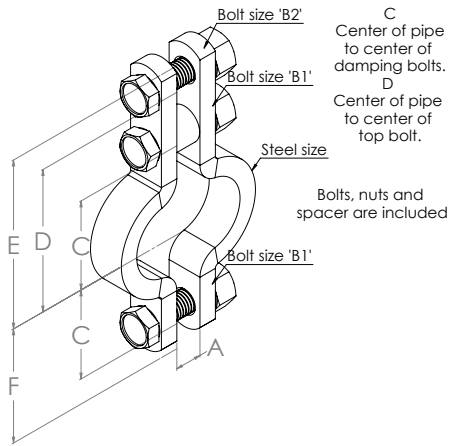
Clamp

Part No.	Nominal Pipe Size	"A"	"C"	"D"	"E"	"F"	Design Load (Kg)
S7000 1½"	40	27	56	105	124	68	80
S7000 2"	50	27	56	130	149	70	95
S7000 2½"	65	27	60	137	156	75	100
S7000 3"	80	27	74	151	170	89	105
S7000 4"	100	27	88	165	194	114	280
S7000 5"	125	27	102	178	206	127	300
S7000 6"	150	37	127	218	252	156	490
S7000 8"	200	37	152	243	278	181	570
S7000 10"	250	37	181	270	304	210	610
S7000 12"	300	37	200	295	330	235	715
S7000 14"	350	51	230	322	364	272	1550
S7000 16"	400	51	256	348	389	297	1600
S7000 18"	450	51	281	373	414	322	1757
S7000 20"	500	51	314	403	444	355	2120
S7000 24"	600	51	374	454	495	416	2875



Heavy Duty Double Bolt Pipe Calmp

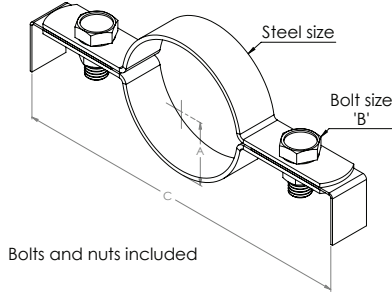
Material: Steel
Standard Finish: Electro-Plated



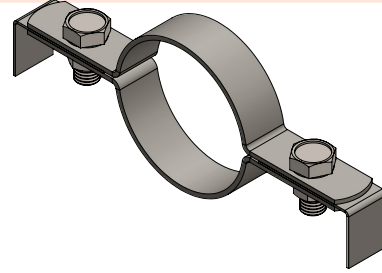
Part No.	Nominal Pipe Size	"A"	Bolt Size "B ₁ "	Bolt Size "B ₂ "	"C"	"D"	"E"	"F"	Design Load (Kg)
S7010 6"	150	44	20 × 90	25 × 90	121	227	259	152	400
S7010 8"	200	50	20 × 90	25 × 90	152	257	289	184	500
S7010 10"	250	57	25 × 100	30 × 100	184	289	333	229	1000
S7010 12"	300	64	25 × 120	30 × 120	219	319	364	264	1245
S7010 14"	350	64	30 × 120	30 × 120	245	343	394	295	1767
S7010 16"	400	76	30 × 140	40 × 140	276	378	435	333	2583
S7010 18"	450	89	40 × 150	40 × 150	318	413	464	368	3802
S7010 20"	500	89	40 × 150	40 × 150	343	438	502	406	5432
S7010 24"	600	89	40 × 150	40 × 150	394	491	567	470	7684
S7010 30"	750	108	40 × 200	40 × 200	505	718	832	619	11568



Marine Pipe Clamp Offset Pipe Clamp

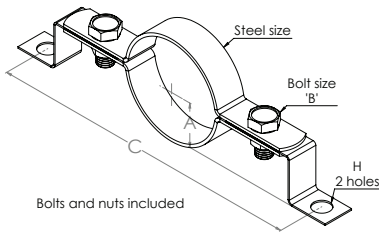


Material: Steel (Stainless Steel Available)
Standard Finish: Electro-Plated or Hot-Dip Galvanized

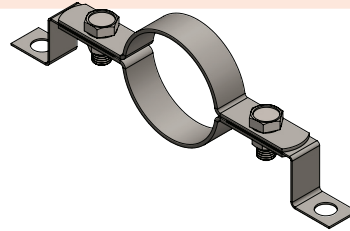


Clamp

Part No.	Nominal Pipe Size	"A"	Bolt Size "B"	"C"	Design Load (Kg)
S7020 ¾"	20	305	10 × 30	113	75
S7020 1"	25	305	10 × 30	119	90
S7020 1¼"	32	305	10 × 30	127	97
S7020 1½"	40	305	10 × 30	133	105
S7020 2"	50	305	13 × 30	152	135
S7020 2½"	65	305	13 × 30	184	186
S7020 3"	80	305	13 × 30	200	197
S7020 4"	100	305	13 × 40	235	200
S7020 5"	125	305	13 × 40	267	215
S7020 6"	150	305	16 × 40	318	495
S7020 8"	200	305	16 × 50	372	503



Material: Steel (Stainless Steel Available)
Standard Finish: Electro-Plated or Hot-Dip Galvanized

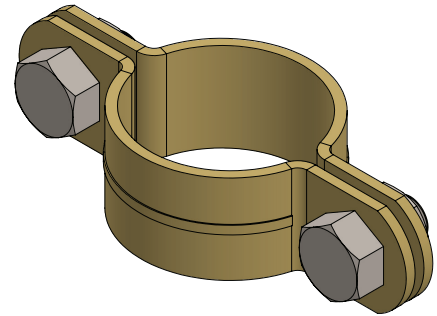
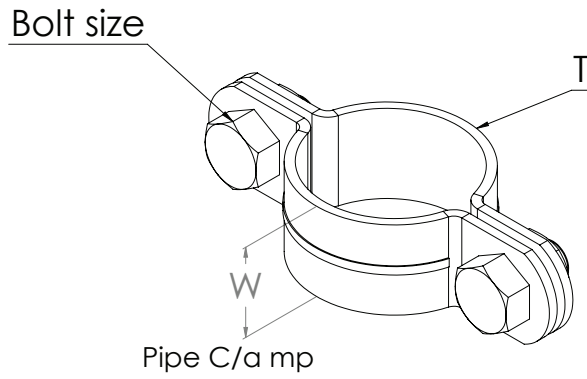


Part No.	Nominal Pipe Size	"A"	Bolt Size "B"	"C"	"H"	Design Load (Kg)
S7030 ½"	15	64	10 × 30	152	12	40
S7030 ¾"	20	64	10 × 30	186	12	45
S7030 1"	25	67	10 × 30	192	12	50
S7030 1¼"	32	71	10 × 30	200	12	55
S7030 1½"	40	75	10 × 30	210	12	60
S7030 2"	50	81	10 × 30	232	12	80
S7030 2½"	65	87	10 × 30	267	12	95
S7030 3"	80	95	10 × 30	283	12	102
S7030 4"	100	108	14 × 40	318	16	145
S7030 5"	125	121	14 × 40	349	16	155
S7030 6"	150	135	14 × 40	419	16	250
S7030 8"	200	160	16 × 50	473	16	310
S7030 10"	250	197	16 × 50	584	21	910
S7030 12"	300	222	16 × 60	635	21	990



Copper Pipe Clamp

**Material: Copper
Standard Finish**

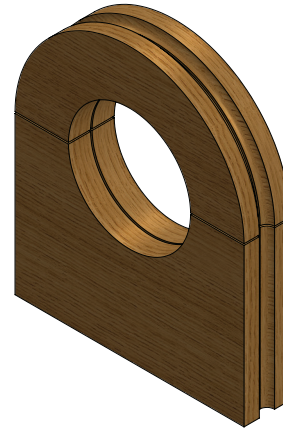
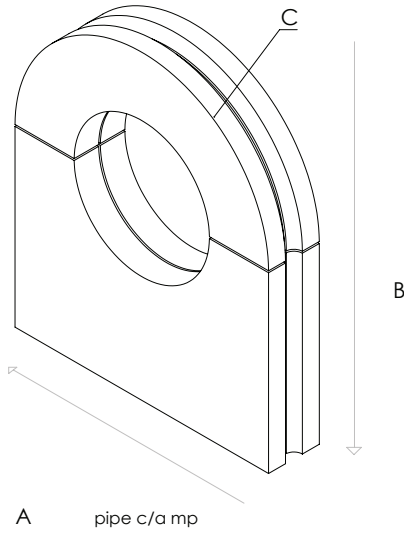


Part No.	Pipe Size	Width W	Bolt Size	Design Load (Kg)
S7040 ½"	15	25	8×25	15
S7040 ¾"	25	25	8×25	18
S7040 1"	32	25	8×30	22
S7040 1¼"	40	25	8×30	24
S7040 1½"	50	25	8×30	24
S7040 2"	62	25	8×30	30
S7040 2½"	75	25	8×30	35
S7040 3"	90	30	8×30	40
S7040 4"	110	30	8×30	40



Wooden Support

Material: Beech wood



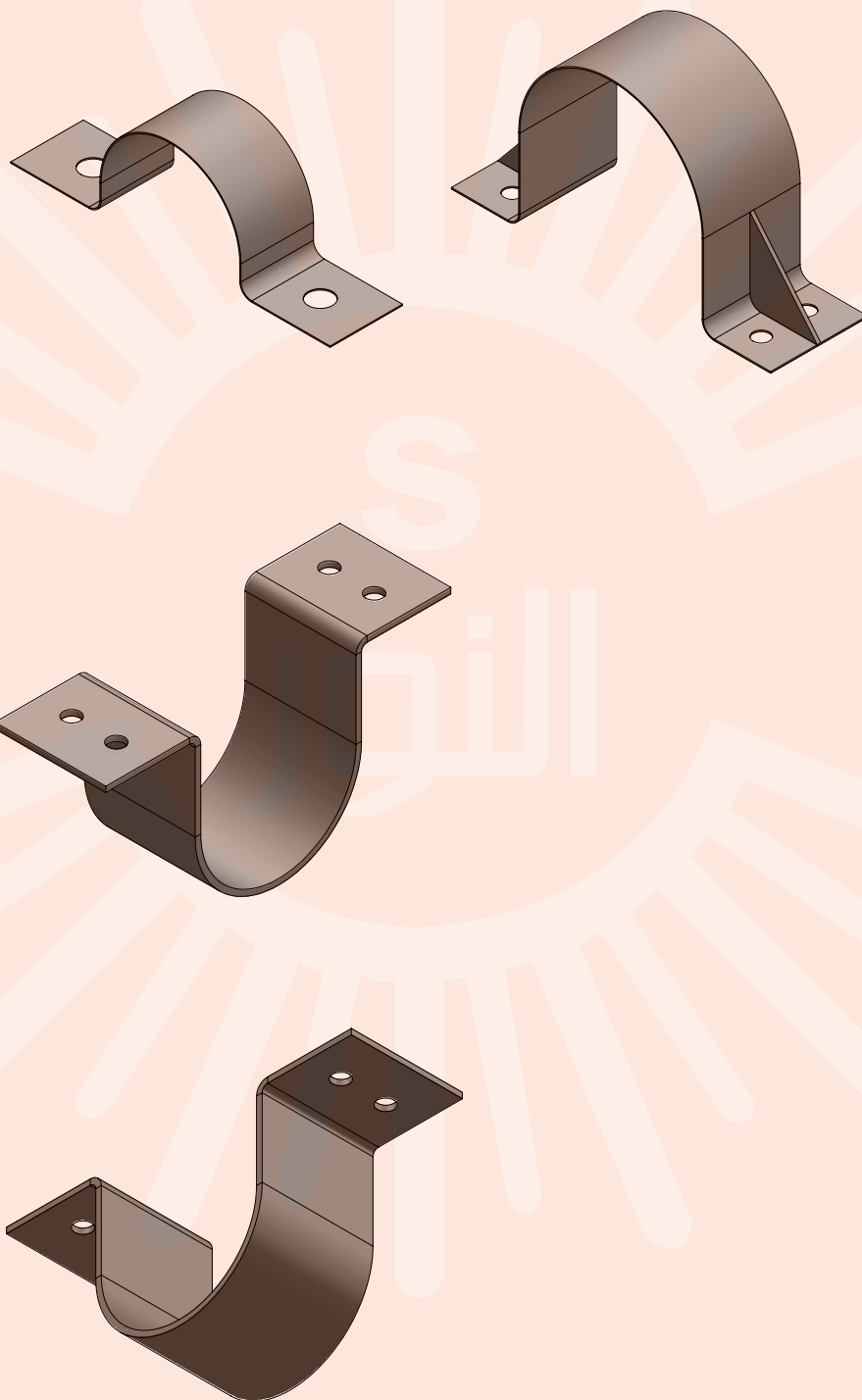
Clamp

Part No.	"A"	"B"	"C"
S7050 1/2"	125	125	50
S7050 3/4"	125	125	50
S7050 1"	125	125	50
S7050 1 1/4"	130	130	50
S7050 1 1/2"	145	145	50
S7050 2"	145	145	50
S7050 2 1/2"	165	165	50
S7050 3"	180	180	50
S7050 4"	210	210	50
S7050 5"	240	240	50
S7050 6"	260	260	50
S7050 8"	315	315	50
S7050 10"	380	380	50

Notes



Strap

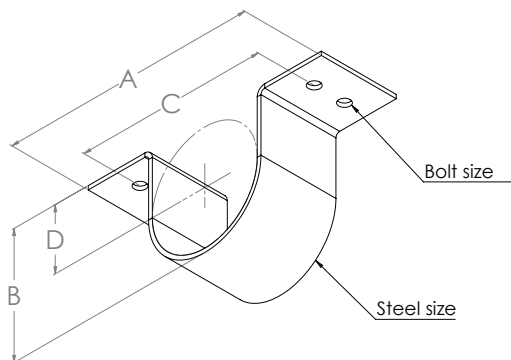


Strap

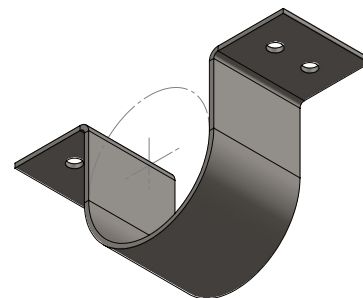


Short Pipe Strap

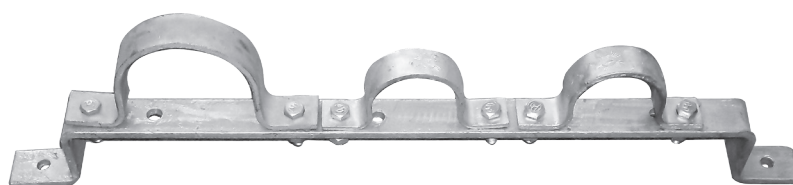
Material: Steel (Stainless Steel Available)
Standard Finish: Electro-Plated or Hot-Dipped Galvanized



Note:
 pipe size 1/2" thru 2" have 2 mounting holes.
 pipe size 2 1/2" thru 4" as illustrated above.



Part No.	Nominal Pipe Size	"A"	"B"	"C"	"D"	Bolt Size	Design Load (Kg)
S7060 1/2"	15	91	30	68	14	6	10
S7060 3/4"	20	98	38	76	19	6	12
S7060 1"	25	105	44	83	22	8	14
S7060 1 1/4"	32	116	56	94	29	8	15
S7060 1 1/2"	40	132	65	106	33	8	26
S7060 2"	50	146	75	121	37	10	31
S7060 2 1/2"	65	159	91	133	48	10	69
S7060 3"	80	175	102	149	50	10	78
S7060 4"	100	203	129	178	65	12	96

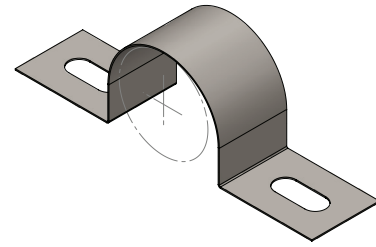
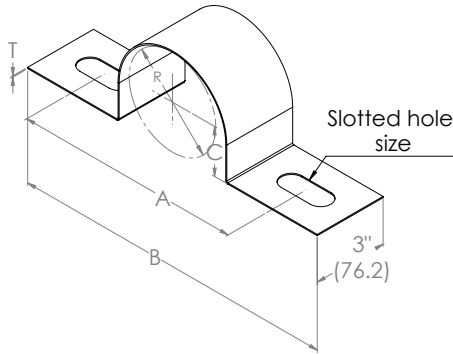


Short Pipe Strap Ruler: Sizes according to Customer requirement



Standard Hold-Down Pipe Guide

Material: Steel
Standard Finish: Electro-Plated



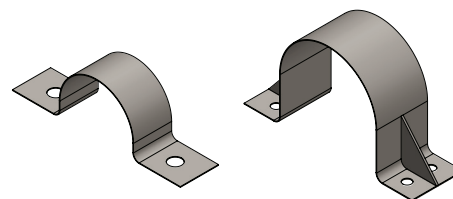
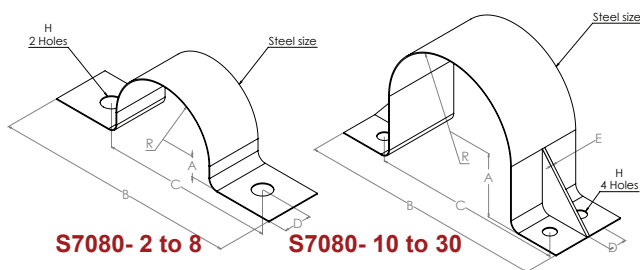
Starp

Part No.	Nominal Pipe Size	"A"	"B"	"C"	"R"	Slotted Hole Size	Design Load (Kg)
S7070 1½"	40	140	216	25	33	24×49	90
S7070 2"	50	152	229	30	38	24×49	100
S7070 2½"	65	165	241	37	40	24×49	110
S7070 3"	80	191	273	44	48	30×56	201
S7070 4"	100	229	311	57	60	30×56	215
S7070 5"	125	254	337	70	75	30×56	256
S7070 6"	150	279	362	86	87	30×56	304
S7070 8"	200	330	412	105	113	30×56	345
S7070 10"	250	381	464	137	140	30×56	435
S7070 12"	300	432	514	162	165	30×56	527
S7070 14"	350	483	565	178	181	30×56	599
S7070 16"	400	533	615	203	203	30×56	638
S7070 18"	450	584	667	229	232	30×56	744
S7070 20"	500	635	718	254	257	30×56	803
S7070 24"	600	737	819	305	308	30×56	965
S7070 30"	750	889	972	381	384	30×56	1527



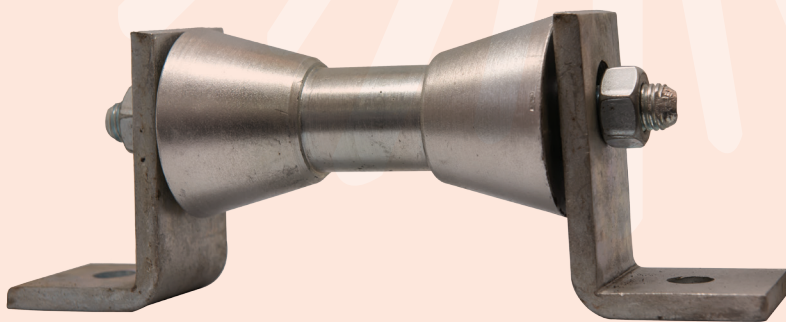
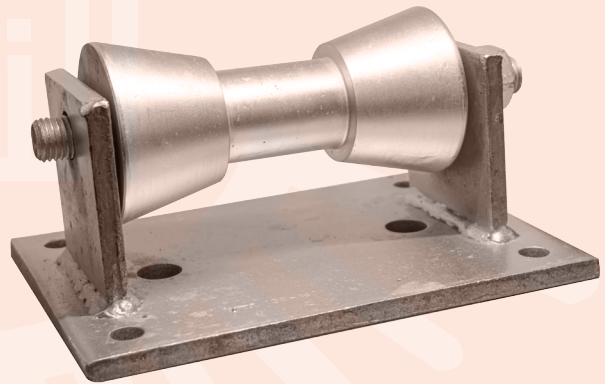
Hold-Down Anchor Clamp

Material: Steel
Standard Finish: Electro-Plated or Hot-Dip Galvanized



Part No.	Nominal Pipe Size	"A"	"B"	"C"	"D"	"E"	"H"	"R"	Design Load (Kg)
S7080 2"	50	24	206	149	38	—	22	30	140
S7080 2½"	65	30	219	162	38	—	22	37	152
S7080 3"	80	38	235	178	38	—	22	44	190
S7080 4"	100	51	260	203	38	—	22	57	205
S7080 5"	125	65	287	230	38	—	22	71	255
S7080 6"	150	78	346	270	76	—	25	84	875
S7080 8"	200	103	397	321	76	—	25	110	1025
S7080 10"	250	130	476	387	63	12	30	137	1576
S7080 12"	300	156	527	438	63	12	30	162	2001
S7080 14"	350	171	559	470	76	12	30	178	2532
S7080 16"	400	197	610	521	76	12	30	203	3221
S7080 18"	450	222	660	571	89	12	30	229	4275
S7080 20"	500	248	711	622	89	12	30	254	4432
S7080 24"	600	298	813	723	89	12	30	305	5266
S7080 30"	750	375	965	876	89	12	30	381	6789

Pipe Roller

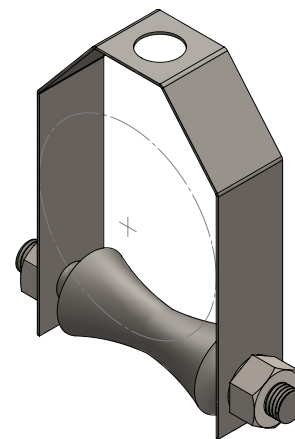
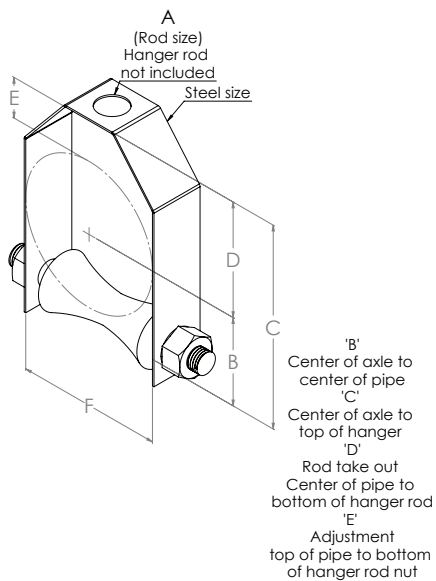


pipe
Roller



Adjustable Roller Hanger

Material: Steel with Cast Iron Roller
Standard Finish: Electro-Plated or Hot-Dip Galvanized

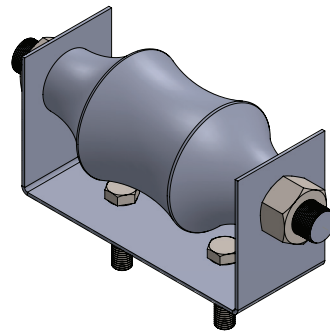
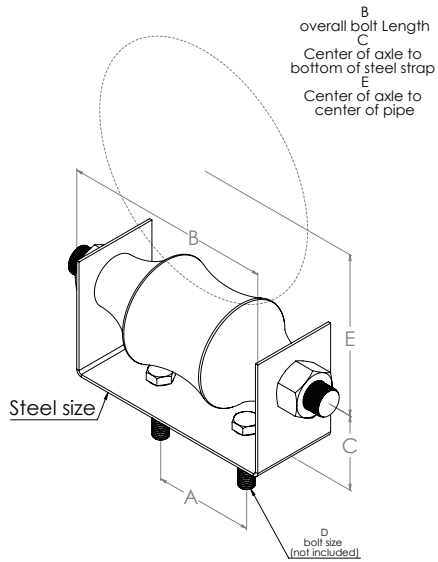


Part No.	Nominal Pipe Size	Rod Size "A"	"B"	"C"	"D"	"E"	"F"	Design Load (Kg)
S7090 2"	50	10	40	121	60	37	73	52
S7090 2½"	65	12	48	152	81	51	83	75
S7090 3"	80	12	56	168	89	51	98	85
S7090 4"	100	16	70	200	102	51	124	146
S7090 5"	125	16	86	233	116	51	151	265
S7090 6"	150	16	100	264	129	51	178	340
S7090 8"	200	18	129	320	154	51	229	550
S7090 10"	250	18	159	379	183	52	283	700
S7090 12"	300	20	187	441	213	57	340	1100
S7090 14"	350	25	209	483	222	57	368	1500
S7090 16"	400	25	235	527	248	50	416	1710
S7090 18"	450	25	264	602	291	68	467	2200
S7090 20"	500	30	292	657	311	64	518	3000



Pipe Roller Chair

Material: Steel with Cast Iron Roller
Standard Finish: Electro-Plated or Hot-Dip Galvanized



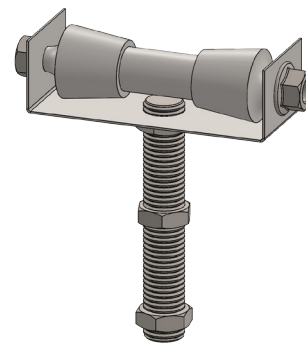
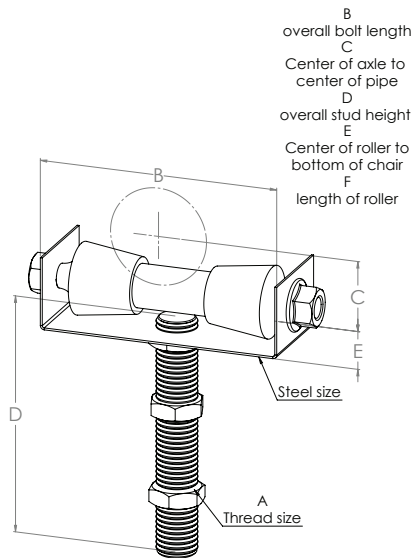
pipe
Roller

Part No.	Nominal Pipe Size	"A"	"B"	"C"	Bolt Size "D"	"E"	Design Load (Kg)
S8000 2"	50	32	118	38	10	40	54
S8000 2½"	65	32	137	41	10	48	66
S8000 3"	80	51	152	44	10	56	78
S8000 4"	100	51	184	59	13	70	137
S8000 5"	125	76	214	64	13	86	182
S8000 6"	150	79	248	70	13	100	281
S8000 8"	200	86	305	76	16	128	396
S8000 10"	250	133	367	90	16	159	576
S8000 12"	300	140	422	105	16	187	870



Roller Support

**Material: Steel with Cast Iron Roller
Standard Finish: Electro-Plated
or Hot-Dip Galvanized**

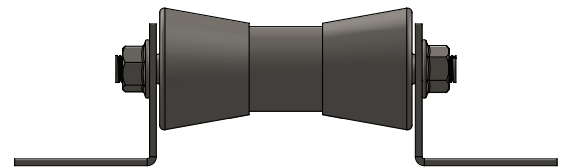
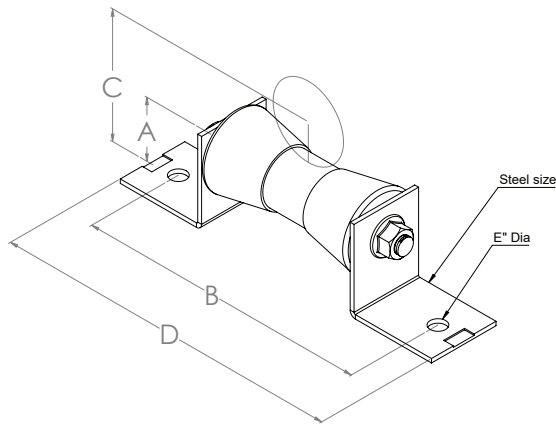


Part No.	Nominal Pipe Size	Thread Size "A"	"B"	"C"	"D"	"E"	Length of Roller	Design Load (Kg)
S8010 2"	50	16	121	49	127	37	70	106
S8010 2½"	65	16	121	56	127	37	70	106
S8010 3"	80	16	121	64	127	37	70	106
S8010 4"	100	20	149	75	152	38	95	160
S8010 5"	125	20	149	89	152	38	95	160
S8010 6"	150	20	149	102	152	38	95	160
S8010 8"	200	22	222	137	152	57	152	400
S8010 10"	250	22	222	164	152	57	152	400
S8010 12"	300	25	286	192	178	70	203	720
S8010 14"	350	25	286	208	178	70	203	720
S8010 16"	400	30	318	238	203	76	229	1000
S8010 18"	450	30	318	264	203	76	229	1000
S8010 20"	500	30	318	289	203	76	229	1000



Pipe Roller Support

Material: Steel with Cast Iron Roller
Standard Finish: Electro-Plated
or Hot-Dip Galvanized



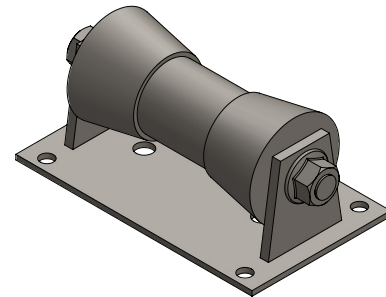
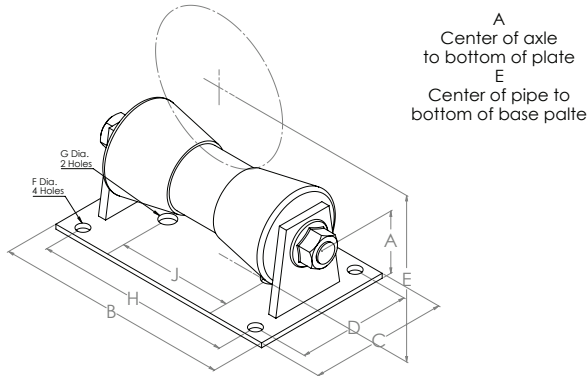
pipe
Roller

Part No.	Nominal Pipe Size	"A"	"B"	"C"	"D"	"E"	Design Load (Kg)
S8020 2"	50	37	152	81	194	14	80
S8020 2½"	65	37	152	87	194	14	80
S8020 3"	80	37	152	95	194	14	80
S8020 4"	100	37	178	107	219	14	105
S8020 5"	125	37	178	120	219	14	105
S8020 6"	150	37	178	134	219	14	105
S8020 8"	200	46	222	178	264	14	246
S8020 10"	250	46	222	205	264	14	246
S8020 12"	300	62	308	250	365	21	472
S8020 14"	350	62	308	266	365	21	472
S8020 16"	400	67	333	302	391	21	684
S8020 18"	450	67	333	327	391	21	684
S029 20"	500	67	333	352	391	21	684



Steel Roller Stand

Material: Steel with Cast Iron Roller
Standard Finish: Electro-Plated or Hot-Dip Galvanized

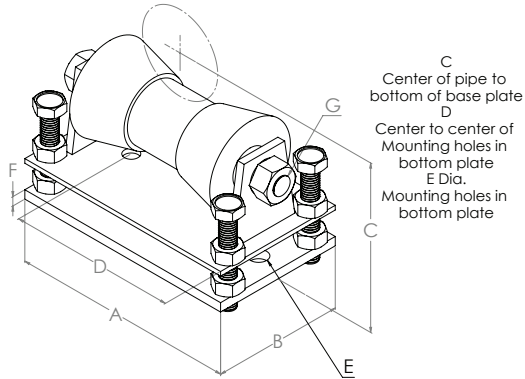


Part No.	Nominal Pipe Size	"A"	"B"	"C"	"D"	"E"	Dia. "F"	Dia. "G"	"H"	"J"	Design Load (Kg)
S8030 2"	50	44	213	152	102	94	13	25	162	87	230
S8030 2½"	65	44	213	152	102	100	13	25	162	87	230
S8030 3"	80	44	213	152	102	108	13	25	162	87	230
S8030 4"	100	52	251	152	108	127	13	25	200	119	286
S8030 5"	125	52	251	152	108	141	13	25	200	119	286
S8030 6"	150	52	251	152	108	154	13	25	200	119	286
S8030 8"	200	87	219	203	127	224	16	25	178	102	577
S8030 10"	250	87	219	203	127	251	16	25	178	102	577
S8030 12"	300	98	278	203	152	291	21	25	230	146	905
S8030 14"	350	98	278	203	152	306	21	25	230	146	905
S8030 16"	400	108	314	254	165	346	21	25	260	171	1553
S8030 18"	450	108	314	254	165	373	21	25	260	171	1553
S8030 20"	500	108	314	254	165	399	21	25	260	171	1553
S8030 24"	600	111	343	254	165	449	21	25	289	191	2136
S8030 30"	750	130	432	273	203	552	27	25	362	254	3235

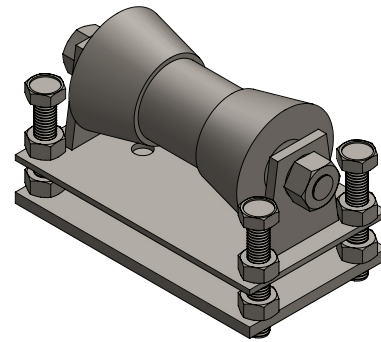


Adjustable Roller Stand with Base Plate

Material: Steel with Cast Iron Roller
Standard Finish: Electro-Plated
or Hot-Dip Galvanized



C
Center of pipe to
bottom of base plate
D
Center to center of
Mounting holes in
bottom plate
E Dia.
Mounting holes in
bottom plate



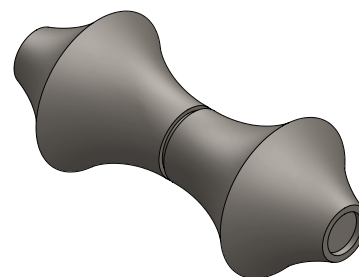
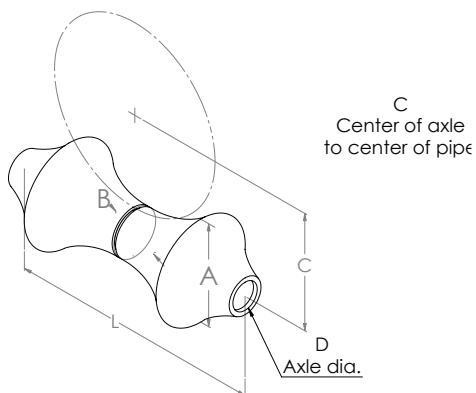
pipe
Roller

Part No.	Nominal Pipe Size	"A"	"B"	"C"	"D"	"E"	"F"	Axle Dia. "G"	Design Load (Kg)
S8040 2"	50	175	152	143	98	25	25	12	320
S8040 2½"	65	175	152	143	98	25	25	12	320
S8040 3"	80	175	152	157	98	25	25	12	320
S8040 4"	100	206	152	189	130	25	25	12	320
S8040 5"	125	206	152	203	130	25	25	12	495
S8040 6"	150	206	152	215	130	25	25	12	495
S8040 8"	200	270	203	297	187	25	28	20	1010
S8040 10"	250	270	203	324	187	25	28	20	1010
S8040 12"	300	330	203	359	241	25	28	22	1501
S8040 14"	350	330	203	365	241	25	28	22	1501
S8040 16"	400	372	254	438	283	25	30	29	2320
S8040 18"	450	372	254	464	283	25	30	29	2320
S8040 20"	500	372	254	486	283	25	30	29	2320
S8040 24"	600	400	254	540	311	25	35	32	3100
S8040 30"	750	489	267	678	400	25	41	40	5000



Long Pattern Pipe Roller Only

Material: Steel with Cast Iron Roller
Standard Finish: Electro-Plated
or Hot-Dip Galvanized

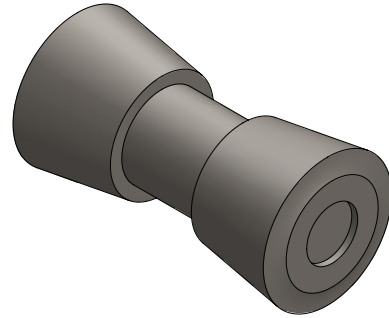
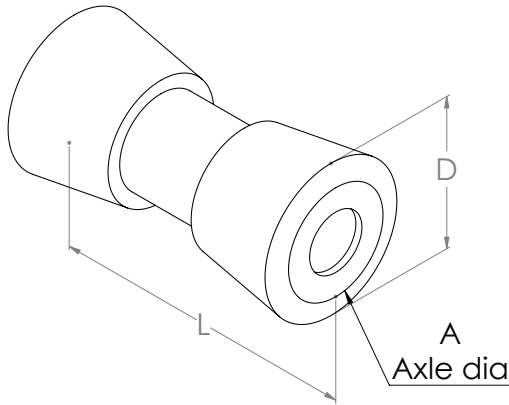


Part No.	Nominal Pipe Size	"A"	"B"	"C"	"D"	"L"	Design Load (Kg)
S8050 2"	50	27	19	40	10	67	13
S8050 2½"	65	32	22	48	13	79	21
S8050 3"	80	35	22	56	13	95	28
S8050 4"	100	41	25	70	13	121	44
S8050 5"	125	48	29	86	16	148	59
S8050 6"	150	54	32	100	19	175	94
S8050 8"	200	67	38	129	22	225	146
S8050 10"	250	81	44	159	22	279	218
S8050 12"	300	95	51	187	25	330	387
S8050 14"	350	111	64	209	29	362	522
S8050 16"	400	118	64	235	32	416	544
S8050 18"	450	130	70	264	32	464	703
S8050 20"	500	143	76	292	35	514	944
S8050 24"	600	171	92	351	38	616	1497
S8050 30"	750	216	114	438	44	768	2812



Short Pattern Pipe Roller Only

Material: Steel with Cast Iron Roller
Standard Finish: Electro-Plated
or Hot-Dip Galvanized



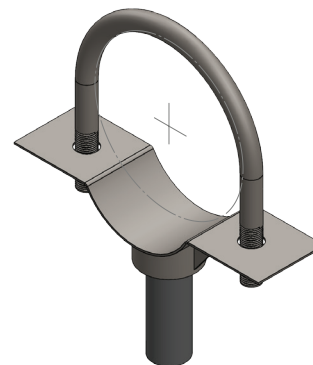
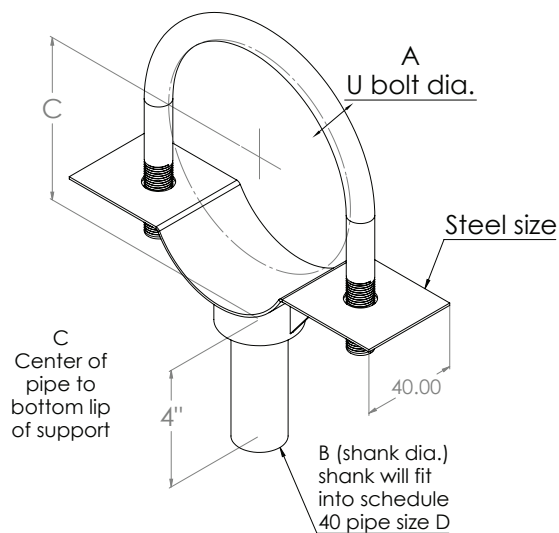
pipe
Roller

Part No.	Nominal Pipe Size	Axle Dia. "A"	"D"	"L"	Design Load (Kg)
S8060 2"	50	13	48	70	30
S8060 2½"	65	13	48	70	30
S8060 3"	80	13	48	70	30
S8060 4"	100	13	52	95	50
S8060 5"	125	13	52	95	50
S8060 6"	150	13	52	95	50
S8060 8"	200	19	83	152	145
S8060 10"	250	19	83	152	145
S8060 12"	300	22	102	203	262
S8060 14"	350	22	102	203	262
S8060 16"	400	29	114	229	345
S8060 18"	450	29	114	229	345
S8060 20"	500	29	114	229	345
S8060 24"	600	32	122	254	375
S8060 30"	750	44	140	318	600
S8060 36"	900	51	152	378	700



Piper Support with U-Bolt

Material: Steel
Standard Finish: Electro-Plated



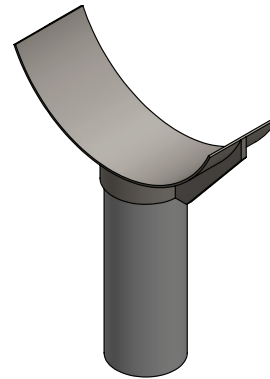
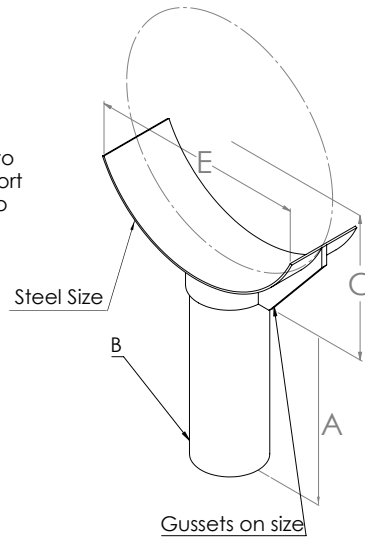
Part No.	Nominal Pipe Size	Max. O.D of the Pipe	"A"	"B"	"C"	"D"	Design Load (Kg)
S8070 ¾"	19	32	6	19	51	19	40
S8070 1"	25	35	6	19	55	19	45
S8070 1¼"	32	43	10	19	59	19	50
S8070 1½"	40	51	10	19	64	19	60
S8070 2"	50	62	10	19	68	19	75
S8070 2½"	65	73	12	33	79	40	100
S8070 3"	80	89	12	33	87	40	110
S8070 4"	100	124	12	60	108	65	200
S8070 5"	125	143	12	60	116	65	230
S8070 6"	150	175	16	60	140	65	375
S8070 8"	200	232	16	60	178	65	456
S8070 10"	250	281	20	60	203	65	500
S8070 12"	300	335	20	60	233	65	700
S8070 14"	350	356	20	73	268	80	950
S8070 16"	400	406	20	73	294	80	1001
S8070 18"	450	457	25	88	345	100	2002
S8070 20"	500	508	25	88	370	100	2040
S8070 24"	600	610	25	88	421	100	2957
S8070 30"	750	762	25	88	526	100	3556
S8070 36"	900	914	25	88	602	100	4062



Pipe Saddle Support

Material: Steel
Standard Finish: Electro-Plated

A
Shank length
B
shank dia.
C
Center of pipe to
bottom lip support
shank will fit into
schedule 40
pipe size D



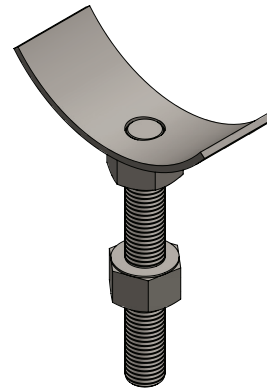
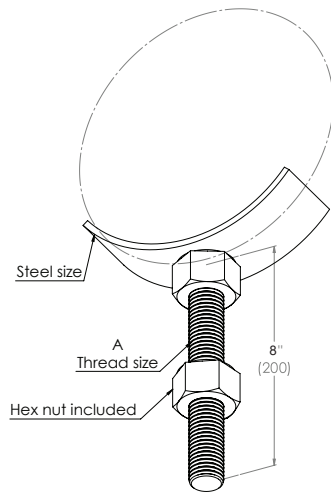
pipe
Roller

Part No.	Nominal Pipe Size	Max. O.D of the Pipe	"A"	"B"	"C"	"D"	E	Design Load (Kg)
S8080 1½"	40	48	76	21	57	20	42	40
S8080 2"	50	60	76	21	62	20	52	42
S8080 2½"	65	73	102	33	68	40	63	76
S8080 3"	80	89	102	33	73	40	77	80
S8080 4"	100	124	102	60	95	65	107	165
S8080 5"	125	141	102	60	103	65	120	170
S8080 6"	150	178	102	60	121	65	154	240
S8080 8"	200	232	102	60	170	65	201	350
S8080 10"	250	283	102	60	197	65	244	400
S8080 12"	300	343	102	60	222	65	297	480
S8080 14"	350	356	102	73	273	80	308	700
S8080 16"	400	406	102	73	298	80	352	802
S8080 18"	450	457	102	89	343	100	398	1201
S8080 20"	500	508	102	89	369	100	439	1306
S8080 24"	600	610	102	89	451	100	527	1822
S8080 30"	750	762	102	89	530	100	660	3410
S8080 36"	900	914	102	89	606	100	792	4000



Adjustable Pipe Saddle

Material: Steel
Standard Finish: Electro-Plated

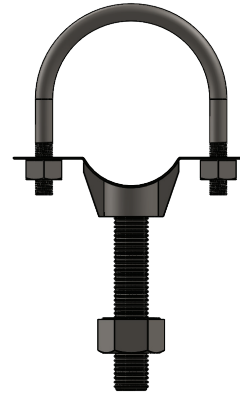
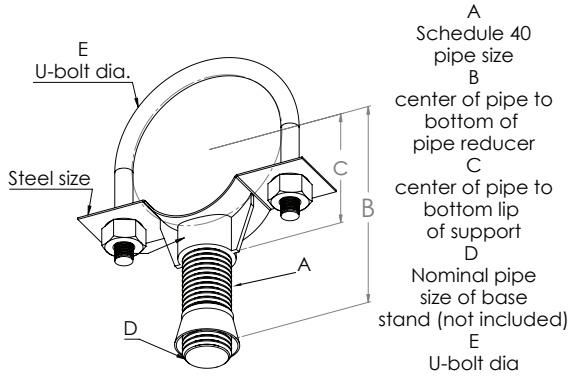


Part No.	Nominal Pipe Size	Max. O.D of the Pipe	Thread Size "A"	Design Load (Kg)
S8090 2"	50	60	22	90
S8090 3"	80	89	22	100
S8090 4"	100	114	25	150
S8090 5"	125	141	25	175
S8090 6"	150	168	32	302
S8090 8"	200	219	32	356
S8090 10"	250	273	40	522
S8090 12"	300	324	40	576



Adjustable Pipe Saddle Support with Yoke

Material: Steel
Standard Finish: Electro-Plated



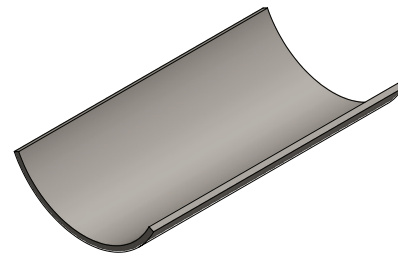
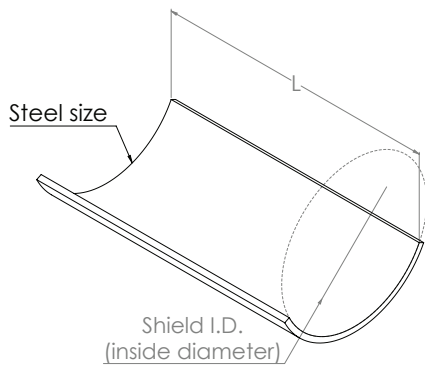
pipe
Roller

Part No.	Nominal Pipe Size	Max. O.D	"A"	"B"		"C"	"D" (Base stand not Supplied)	"E"	Design Load (Kg)
				Min.	Max.				
S9000 ¾"	19	29	19	146	260	51	38	6	100
S9000 1"	25	35	19	163	277	55	38	6	102
S9000 1¼"	32	43	19	167	281	59	38	10	110
S9000 1½"	40	51	19	178	292	64	38	10	120
S9000 2"	50	62	19	176	292	68	38	10	130
S9000 2½"	65	73	40	213	327	79	65	12	225
S9000 3"	80	89	40	221	335	87	65	12	300
S9000 4"	100	124	65	252	367	108	80	12	501
S9000 5"	125	143	65	260	375	116	80	12	555
S9000 6"	150	175	65	284	398	140	80	16	700
S9000 8"	200	232	65	322	437	178	80	16	802
S9000 10"	250	282	65	348	462	203	80	20	913
S9000 12"	300	334	65	377	492	233	80	22	1100
S9000 14"	350	356	80	457	572	268	100	22	1602
S9000 16"	400	406	80	483	597	294	100	22	1711
S9000 18"	450	457	100	547	662	345	150	25	3133
S9000 20"	500	508	100	573	687	370	150	25	3201
S9000 24"	600	610	100	624	738	421	150	25	4120
S9000 30"	750	762	100	729	843	526	150	25	4808
S9000 36"	900	914	100	805	919	602	150	25	5300



Insulation Protection Shield

Material: Steel
Standard Finish: Electro-Plated or Hot-Dip Galvanized

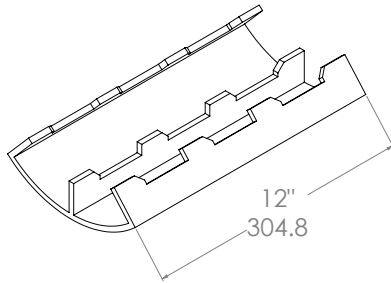


Part No.	"L"	"I.D"	"Required Pipe Hanger Size"
S9010 1½"	305	48	1½"
S9010 2"	305	60	2"
S9010 2½"	305	73	2½"
S9010 3"	305	89	3"
S9010 4"	305	114	4"
S9010 5"	305	127	5"
S9010 6"	305	167	6"
S9010 8"	305	194	8"
S9010 10"	457	245	10"
S9010 12"	610	299	12"
S9010 14"	610	356	14"
S9010 16"	610	381	16"
S9010 18"	610	432	18"
S9010 20"	610	483	20"
S9010 24"	610	533	24"
S9010 30"	610	635	30"
S9010 36"	610	813	36"

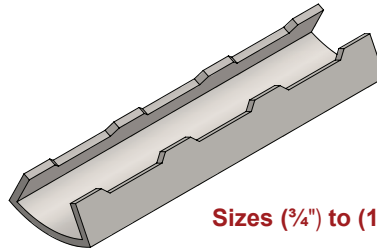
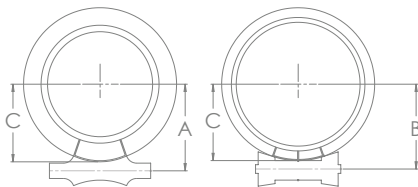


Pipe Covering Protection Saddle

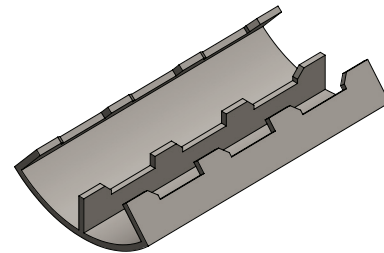
Material: Steel
Standard Finish: Electro-Plated or Hot-Dip Galvanized



size 12" (300) and larger



Sizes (3/4") to (10")



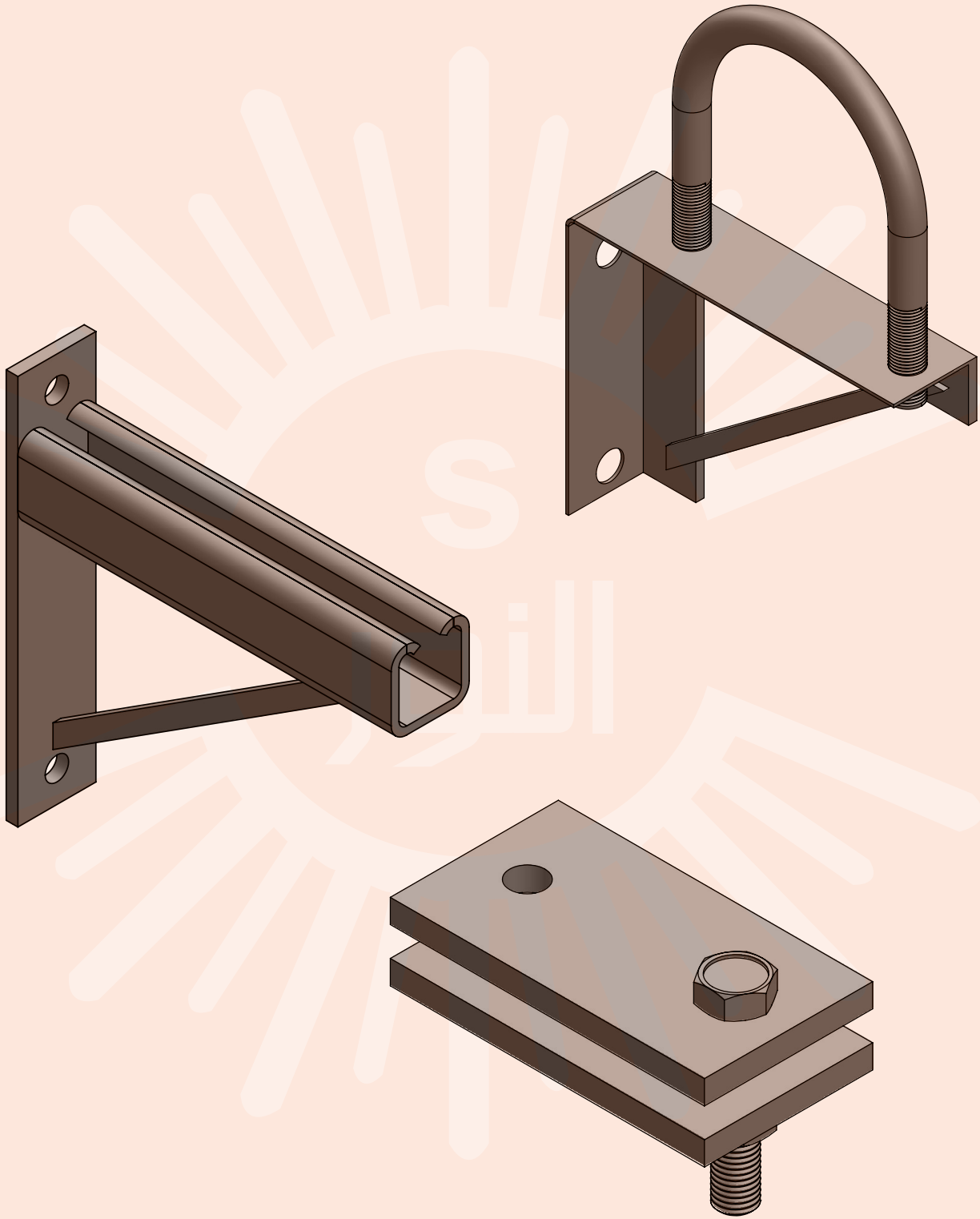
pipe
Roller

Part No.	Nominal Pipe Size	"B"	"A"	Centerline Pipe of Outside of Saddle C
		S030 S031 S028 S029		
S9020 3/4"	3/4" (20)	58mm	51 mm	40mm
S9020 3/4"	3/4" (20)	73mm	70mm	56mm
S9020 3/4"	3/4" (20)	87mm	86mm	69mm
S9020 1"	1" (25)	63mm	58mm	46mm
S9020 1"	1" (25)	76mm	74mm	58mm
S9020 1"	1" (25)	92mm	89mm	73mm
S9020 1 1/4"	1 1/4" (32)	68mm	64mm	50mm
S9020 1 1/4"	1 1/4" (32)	83mm	80mm	56mm
S9020 1 1/4"	1 1/4" (32)	97mm	88mm	78mm
S9020 1 1/4"	1 1/4" (32)	105mm	104mm	87mm
S9020 1 1/2"	1 1/2" (40)	73mm	62mm	54mm
S9020 1 1/2"	1 1/2" (40)	84mm	81mm	65mm
S9020 1 1/2"	1 1/2" (40)	97mm	97mm	79mm
S9020 1 1/2"	1 1/2" (40)	112mm	115mm	92mm
S9020 2"	2" (50)	80mm	75mm	60mm
S9020 2"	2" (50)	93mm	89mm	73mm
S9020 2"	2" (50)	105mm	103mm	78mm
S9020 2"	2" (50)	120mm	120mm	100mm
S9020 2"	2" (50)	132mm	133mm	114mm
S9020 2 1/2"	2 1/2" (65)	86mm	83mm	66mm
S9020 2 1/2"	2 1/2" (65)	100mm	98mm	82mm
S9020 2 1/2"	2 1/2" (65)	116mm	118mm	98mm
S9020 2 1/2"	2 1/2" (65)	127mm	130mm	108mm
S9020 2 1/2"	2 1/2" (65)	135mm	140mm	116mm

Notes



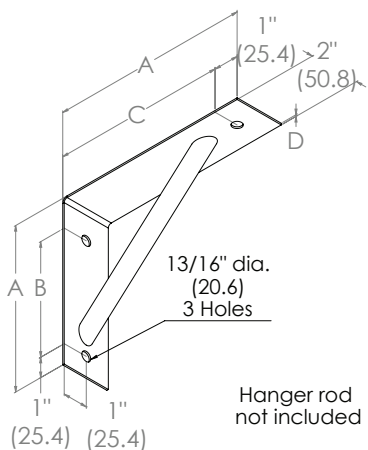
Bracket



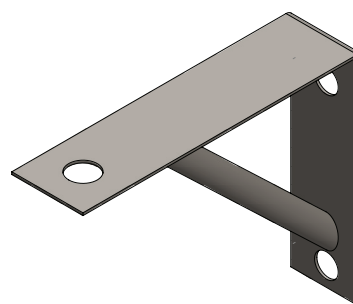
Bracket



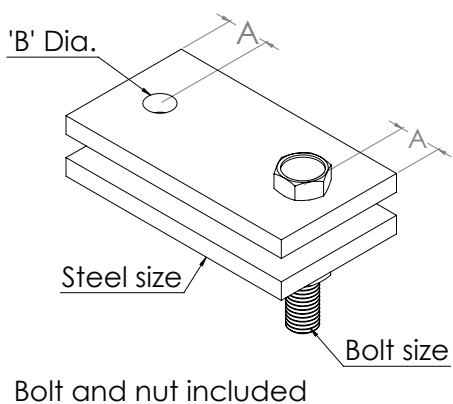
Light Welded Steel Bracket Clip for Light Welded



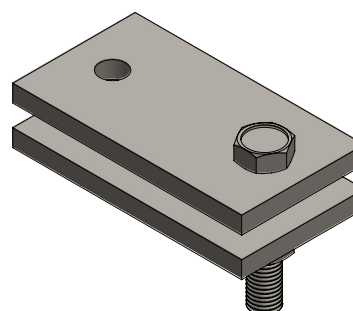
Material: Steel
Standard Finish: Electro-Plated or Hot-Dip Galvanized



Part No.	"A"	"B"	"C"	"D"	Design Load (Kg)
S9030 1"	229	165	203	10	180
S9030 2"	330	267	305	10	250
S9030 3"	483	419	457	10	401



Material: Steel
Standard Finish: Electro-Plated or Hot-Dip Galvanized

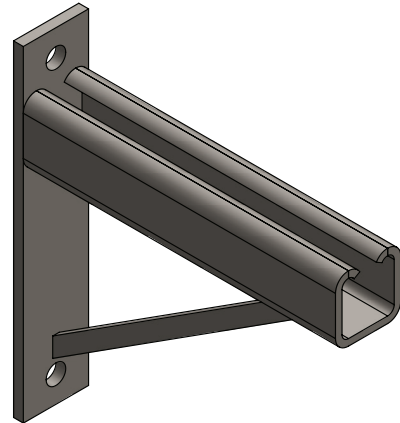
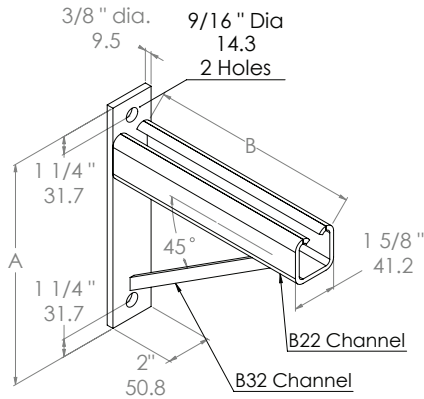


Part No.	"A"	"B"	Bolt Size	Design Load (Kg)
S9040 3/8"	14	11	16	50
S9040 1/2"	22	14	16	70
S9040 5/8"	25	17	16	85



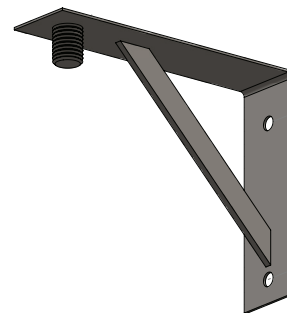
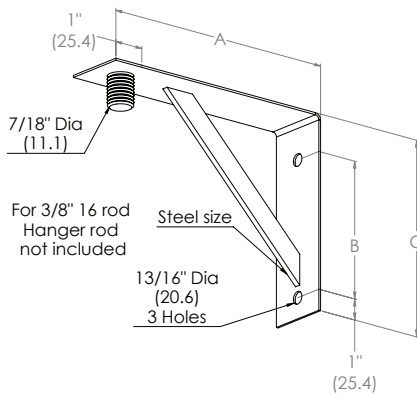
**Light Duty Welded Bracket
Adjustable Strut Bracket**

Material: Steel
Standard Finish: Electro-Plated



Part No.	"A"	"B"	Design Load (Kg)
S9050 1	381	305	243
S9050 2	533	457	422
S9050 3	686	610	588

Material: Steel
Standard Finish: Electro-Plated



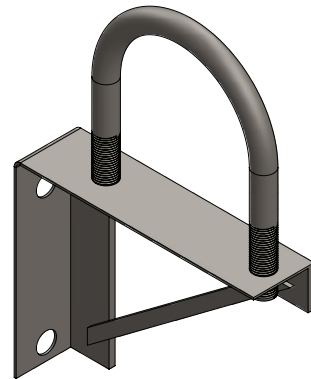
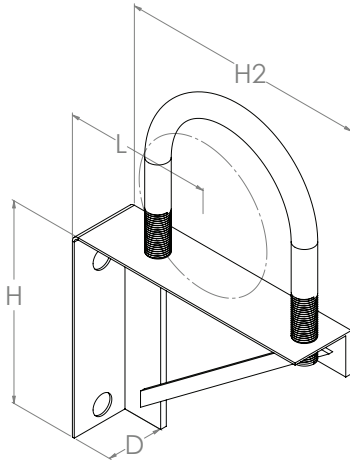
Part No.	"A"	"B"	"C"	Design Load (Kg)
S9060 1	254	165	229	129
S9060 2	356	266	330	154
S9060 3	508	419	483	565

Bracket



U Bolt with Bracket Support

Material: Steel
Standard Finish: Electro-Plated

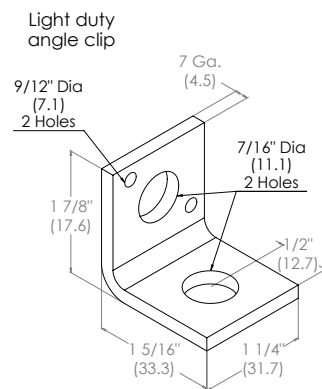
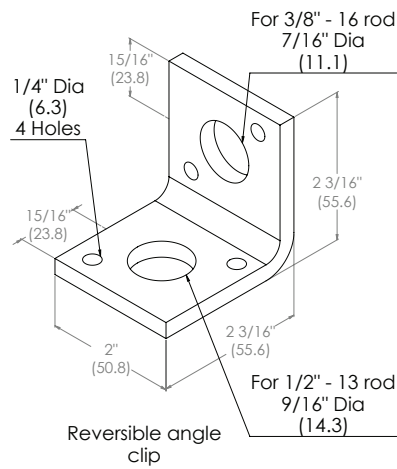
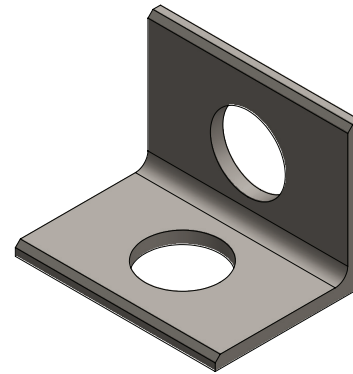
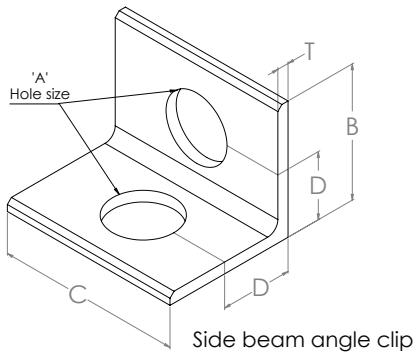


Part No.	H ₁	H ₂	D
S9070 1/2"	30 cm	30 cm	3 cm
S9070 3/4"	30 cm	30 cm	3 cm
S9070 1"	40 cm	40 cm	3 cm
S9070 1 1/4"	40 cm	40 cm	4 cm
S9070 1 1/2"	40 cm	40 cm	4 cm
S9070 2"	50 cm	50 cm	4 cm
S9070 2 1/2"	50 cm	50 cm	5 cm
S9070 3"	50 cm	50 cm	5 cm
S9070 4"	50 cm	50 cm	5 cm
S9070 5"	50 cm	50 cm	5 cm
S9070 6"	60 cm	60 cm	6 cm
S9070 8"	60 cm	60 cm	6 cm



Side Beam Angle Clip

Material: Stainless Steel
Standard Finish: Electro-Plated or Hot-Dip Galvanized



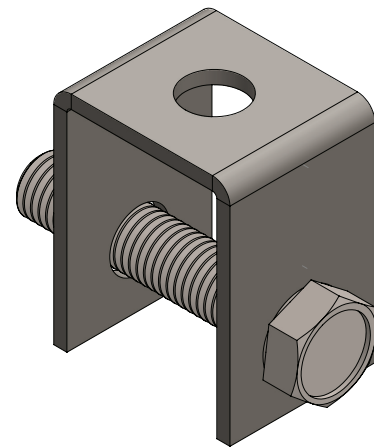
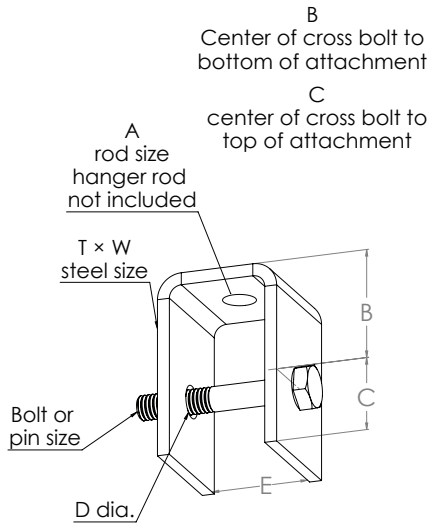
Bracket

Part No.	"A"	"B"	"C"	"D"	Design Load (Kg)
S9080 3/8"	11	56	51	32	24
S9080 1/2"	14	56	51	32	23
S9080 5/8"	18	56	51	32	22
S9080 3/4"	21	76	76	44	74
S9080 7/8"	24	102	102	64	140
S9080 1"	27	102	102	64	182



Welded Beam Attachment

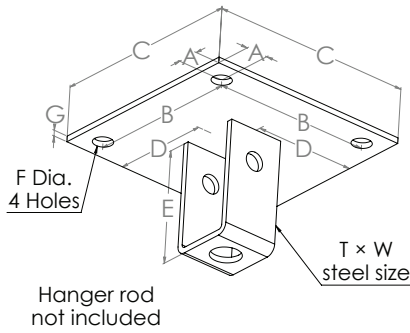
Material: Steel - Stainless Steel
Standard Finish: Electro-Plated



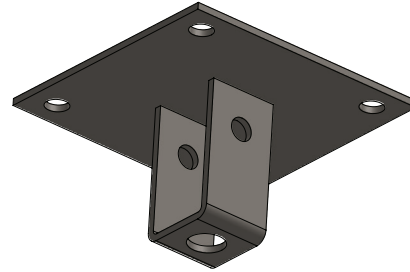
Part No.	Rod Size "A"	Pin or Bolt Size	"B"	"C"	Dia "D"	"E"
S9090 3/8"	10	12	51	22	14	32
S9090 1/2"	13	16	51	22	18	32
S9090 5/8"	16	20	51	22	21	32
S9090 3/4"	19	22	51	29	24	38
S9090 7/8"	22	25	76	32	29	51
S9090 1"	25	30	76	38	32	51
S9090 1 1/8"	29	30	76	44	35	57
S9090 1 1/4"	32	35	76	51	38	64
S9090 1 1/2"	38	40	102	64	44	76
S9090 1 3/4"	44	45	133	64	51	95
S9090 2"	51	50	133	76	60	95



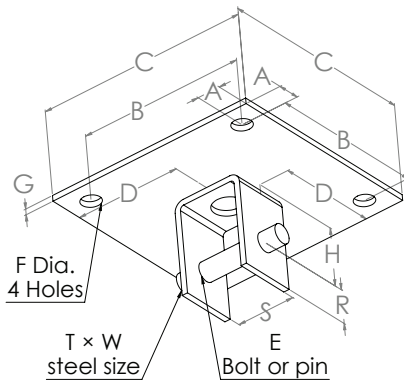
**Rod Attachment Concrete Plate
Clevis Concrete Plate**



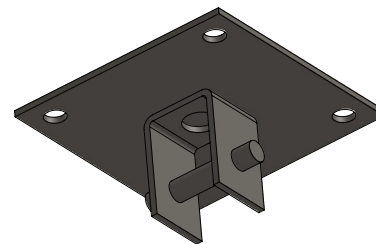
Material: Steel
Standard Finish: Electro-Plated or Hot-Dip Galvanized



Part No.	Rod Size	"A"	"B"	"C"	"D"	"E"	"F"	"G"	Wt/C (Kg)
S10000 3/8"	10	25	203	254	127	73	14	10	500
S10000 1/2"	13	25	203	254	127	73	14	10	518
S10000 5/8"	16	25	203	254	127	73	14	13	676
S10000 3/4"	19	25	203	254	127	79	18	13	714
S10000 7/8"	22	25	203	254	127	79	18	13	742
S10000 1"	25	51	203	305	152	114	21	19	1551
S10000 1 1/8"	29	51	203	305	152	121	24	19	1584
S10000 1 1/4"	32	51	203	305	152	127	24	19	1700
S10000 1 1/2"	38	51	203	305	152	165	29	25	2466



Material: Steel
Standard Finish: Electro-Plated or Hot-Dipped Galvanized



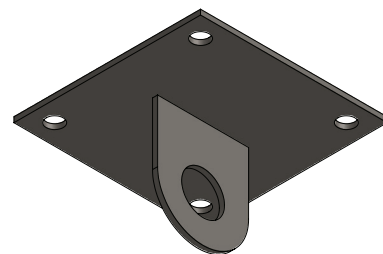
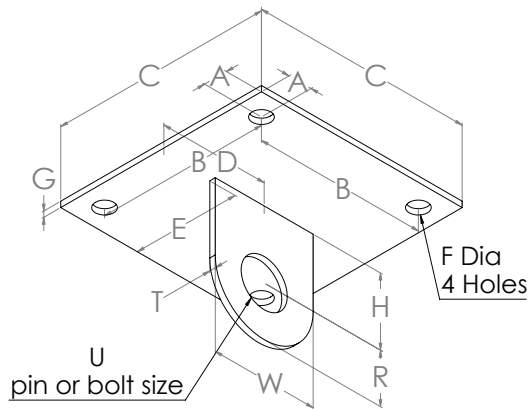
Bracket

Part No.	For Hanger Size	"A"	"B"	"C"	"D"	"E"	"F"	"G"	"H"	"R"	Bolt or Pin Size U	Design Load (Kg)
S10010 3/8"	10	25	203	254	127	12	14	10	51	22	32	500
S10010 1/2"	13	25	203	254	127	16	14	10	51	22	32	500
S10010 5/8"	16	25	203	254	127	20	14	12	51	22	32	600
S10010 3/4"	19	25	203	254	127	20	18	12	51	29	38	700
S10010 7/8"	22	25	203	254	127	25	18	12	76	32	51	780
S10010 1"	25	51	203	305	152	30	21	20	76	38	51	1550
S10010 1 1/8"	29	51	203	305	152	30	24	20	76	44	58	1600
S10010 1 1/4"	32	51	203	305	152	35	24	20	76	51	64	1800
S10010 1 1/2"	38	51	203	305	152	40	29	25	102	64	76	2500



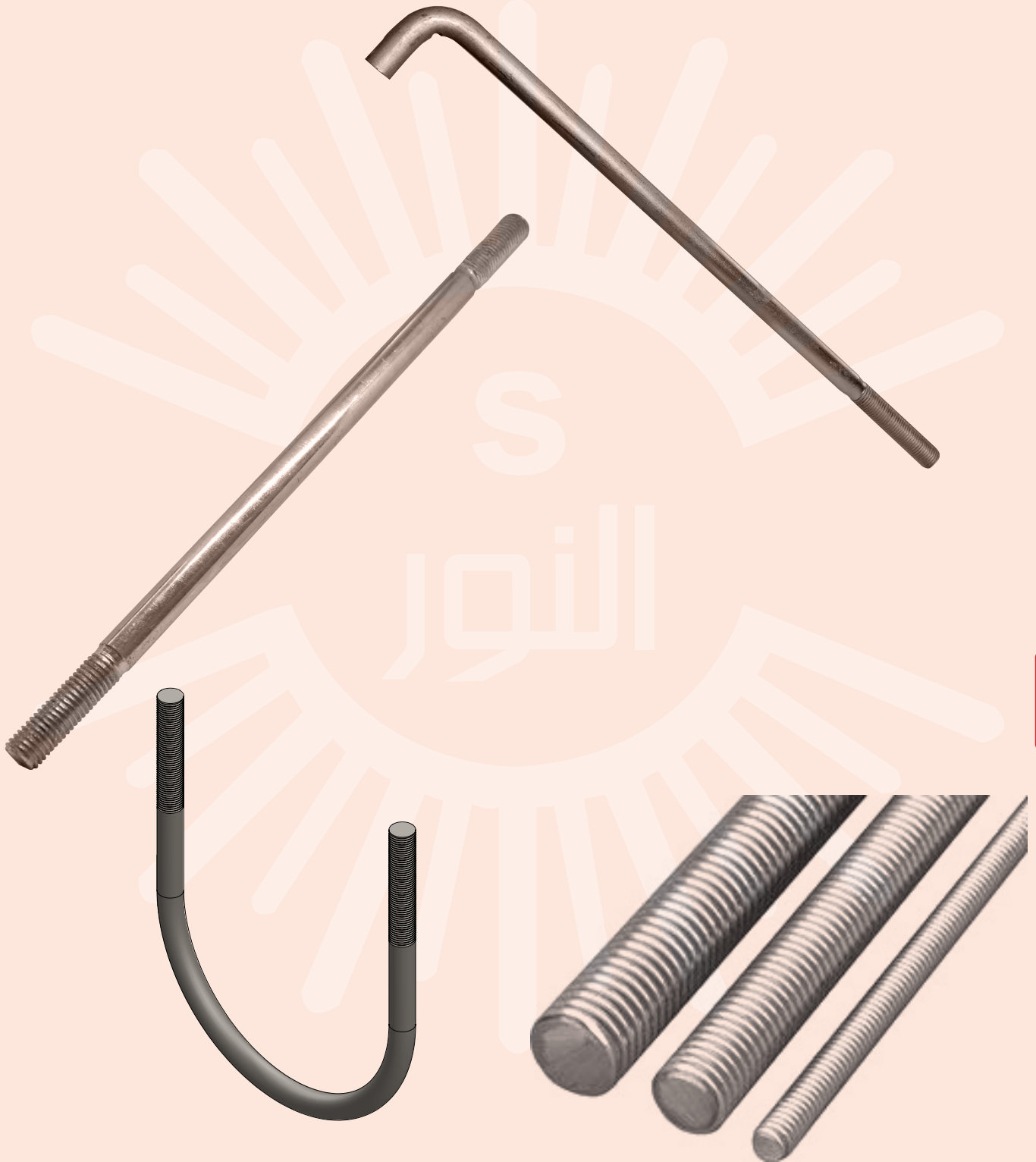
Single Lug Concrete Plate

Material: Steel
Standard Finish: Electro-Plated
or Hot-Dip Galvanized



Part No.	For Hanger Size	"A"	"B"	"C"	"D"	"E"	"F"	"G"	"H"	"R"	Bolt or Pin Size U	Design Load (Kg)
S10020 1/2"	13	25	203	254	127	124	14	10	38	32	16	400
S10020 5/8"	16	25	203	254	127	124	14	13	38	32	19	500
S10020 3/4"	19	25	203	254	127	122	18	13	38	32	22	601
S10020 7/8"	22	25	203	254	127	122	18	13	51	32	25	920
S10020 1"	25	51	203	305	152	146	21	19	52	38	30	1302
S10020 1 1/8"	29	51	203	305	152	146	24	19	76	38	30	1315
S10020 1 1/4"	32	51	203	305	152	145	24	19	76	51	40	1897
S10020 1 1/2"	38	51	203	305	152	143	29	25	76	64	40	2000

Bolts

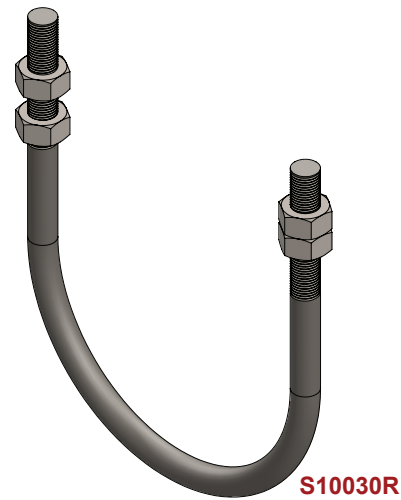
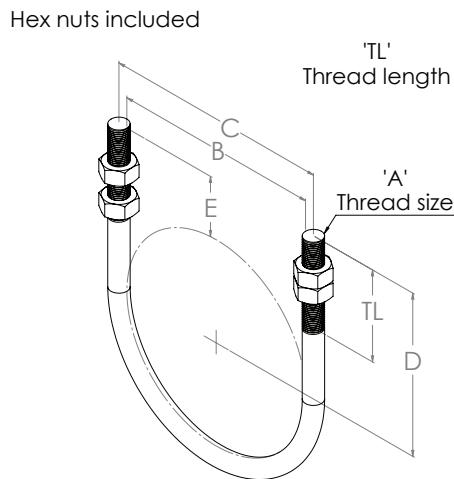


Bolts



Standard U-Bolt

Material: Steel (Stainless Steel Available)
Standard Finish: Electro-Plated



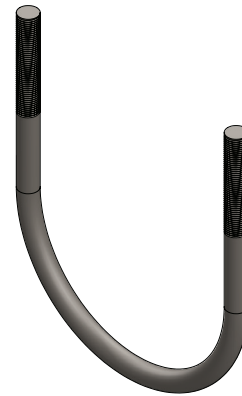
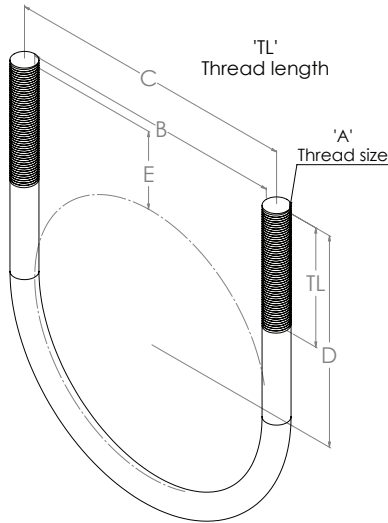
Available with Plastic Coating as S10030R

Part No.	Nominal Pipe Size	Thread Length "TL"	"B"	"C"	"D"	"E"	Design Load (Kg)
S10030 ½"	15	54	24	30	70	57	5
S10030 ¾"	20	54	29	35	70	57	5
S10030 1"	25	54	35	41	70	63	5
S10030 1¼"	32	54	43	53	73	62	12
S10030 1½"	40	64	51	60	76	53	13
S10030 2"	50	64	62	71	83	53	14
S10030 2½"	65	76	75	87	95	58	32
S10030 3"	80	76	91	103	102	57	35
S10030 4"	100	76	116	129	114	57	42
S10030 5"	125	76	144	156	127	56	45
S10030 6"	150	95	171	187	156	71	90
S10030 8"	200	95	222	238	181	71	100
S10030 10"	250	102	276	295	213	76	170
S10030 12"	300	107	327	349	245	82	270
S10030 14"	350	107	359	381	260	82	300
S10030 16"	400	107	410	432	286	82	315
S10030 18"	450	120	460	486	321	92	600
S10030 20"	500	120	511	537	346	92	622
S10030 24"	600	120	613	638	400	92	700
S10030 30"	750	120	765	791	473	92	850



Light-Duty Weight U-Bolt

Material: Steel (Stainless Steel Available)
Standard Finish: Electro-Plated



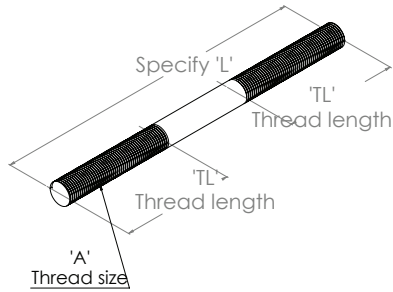
Part No.	Nominal Pipe Size	Thread Length "TL"	"B"	"C"	Tangent "D"	"E"	Design Load (Kg)
S10040 1/2"	15	44	24	30	49	38	3
S10040 3/4"	20	44	29	35	52	40	3
S10040 1"	25	44	35	41	56	39	3
S10040 1 1/4"	32	44	43	49	60	39	4
S10040 1 1/2"	40	44	51	57	62	38	4
S10040 2"	50	44	62	68	68	38	5
S10040 2 1/2"	65	51	75	84	78	41	13
S10040 3"	80	51	91	100	86	41	15
S10040 4"	100	51	116	125	98	41	17
S10040 5"	125	57	144	152	116	45	20
S10040 6"	150	57	171	184	129	44	45
S10040 8"	200	57	222	235	154	44	56
S10040 10"	250	64	276	292	184	48	108
S10040 12"	300	64	327	343	210	48	125

Bolts



Thread Rod (Right-Hand Thread - Both Ends)

Material: Steel
Standard Finish: Electro-Plated



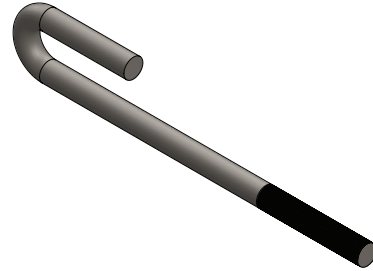
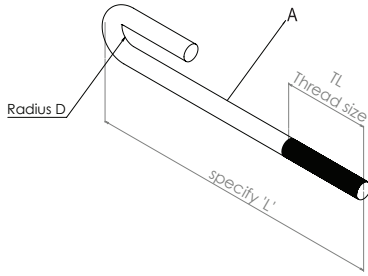
* Lengths are available according to customer needs

Part No.	Thread Size "A"	Standard thread Length TL	Design Load (Kg)
S10050 3/8"	10	64	230
S10050 1/2"	10	64	450
S10050 5/8"	16	64	700
S10050 3/4"	20	76	1000
S10050 7/8"	22	89	1500
S10050 1"	25	102	2000
S10050 1 1/8"	30	114	2500
S10050 1 1/4"	32	127	3200
S10050 1 1/2"	38	152	4700
S10050 1 3/4"	40	178	6300
S10050 2"	50	203	8300
S10050 2 1/4"	60	229	11000
S10050 2 1/2"	60	254	13500
S10050 2 3/4"	70	279	16500
S10050 3"	80	305	20500



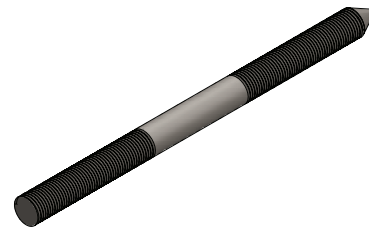
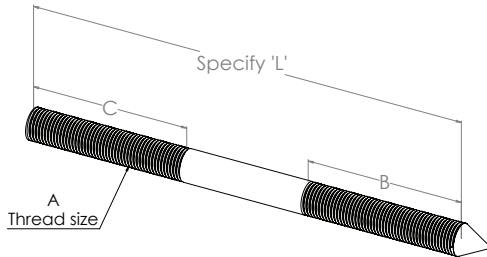
**J-Bolt
Coach Screw Rod**

Material: Steel
Standard Finish: Electro-Plated



Part No.	Thread Size "A"	Thread Length "TL"	"D"
S10060 3/8"	10	51	13
S10060 1/2"	12	51	16
S10060 5/8"	16	64	19
S10060 3/4"	20	64	22
S10060 7/8"	22	64	25

Material: Steel
Standard Finish: Electro-Plated



Bolts

Part No.	Thread Size "A"	Standard Rod Length "L"	Coach Screw Thread Length "B"	Rod Thread Length "C"
S10070	8	80	25	25
S10070	10	100	40	40
S10070	12	100	40	40



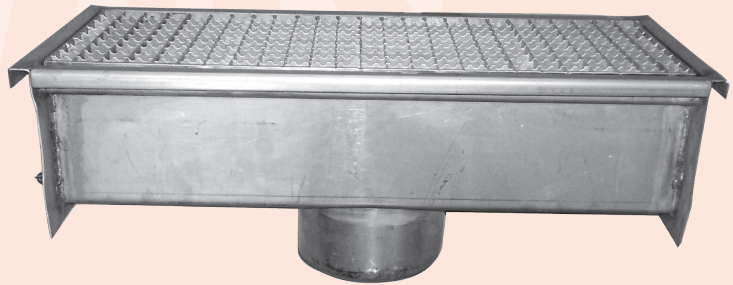
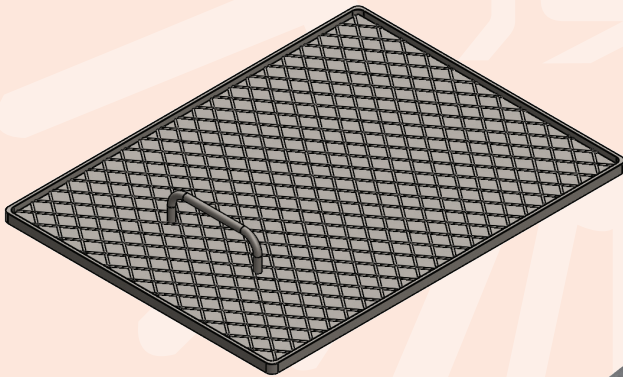
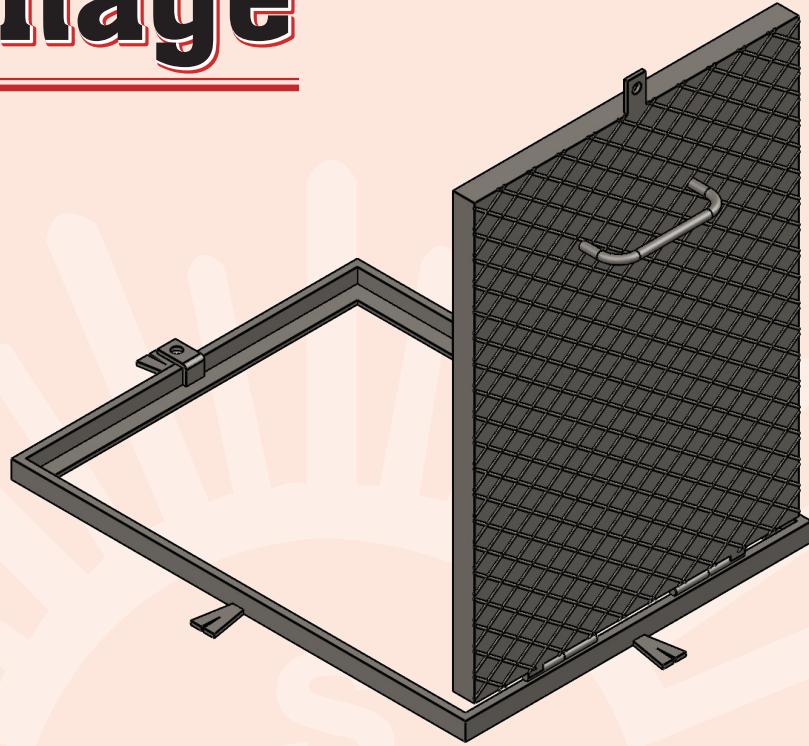
Thread Rod

Material: Steel
Standard Finish: Electro-Plated or Hot-Dip Galvanized



Part No.	Threaded Rod	Standard Length	Design Load (Kg)
S10090	6	2000	459
S10090	8	2000	836
S10090	10	2000	1335
S10090	12	2000	1937
S10090	16	2000	3598
S10090	20	2000	5617

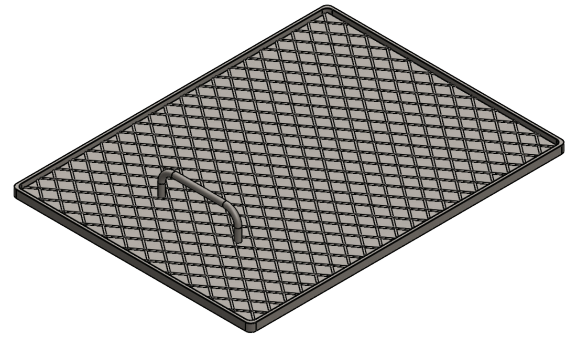
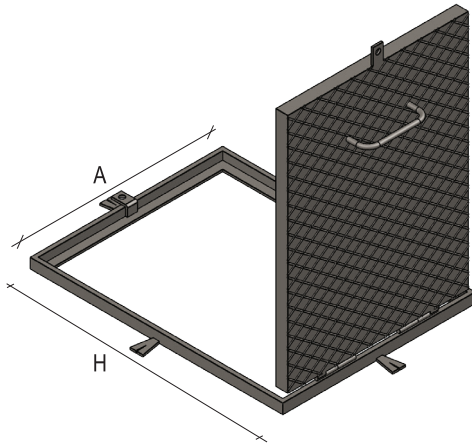
Drainage



Drainage



Manhole Cover

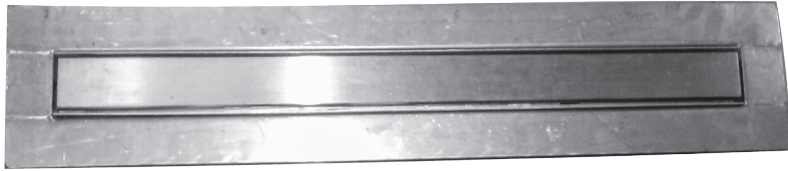


* Special Size according to Customer requirement

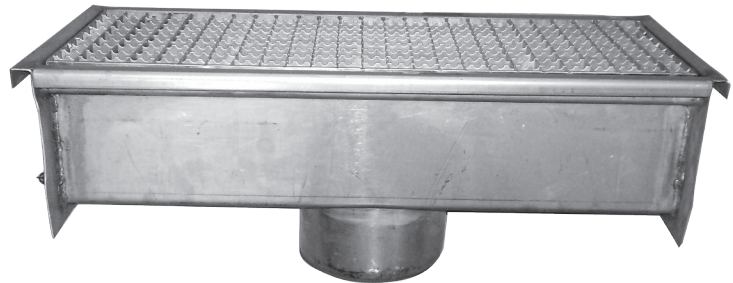
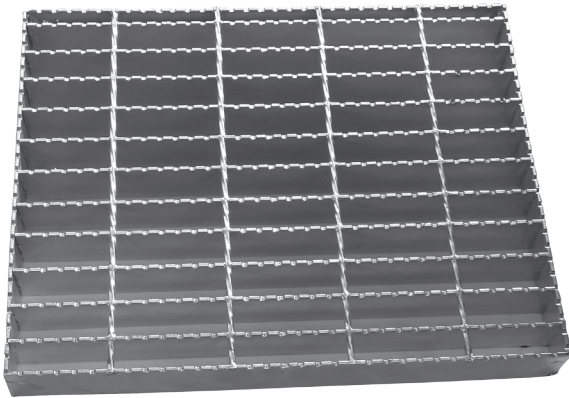
Part No.	A	H
S10100	60	60
S10100	70	70
S10100	80	80
S10100	90	90
S10100	100	100



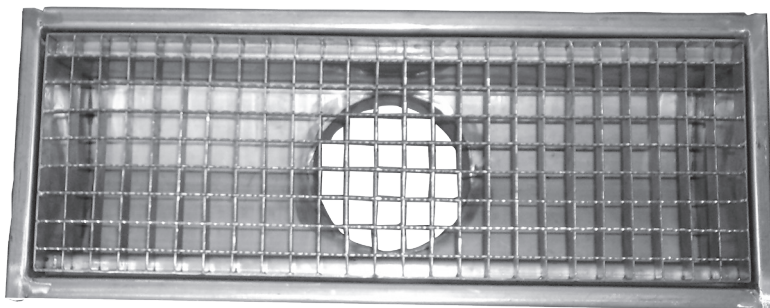
Sizes according to Customer requirement



Shower Drain

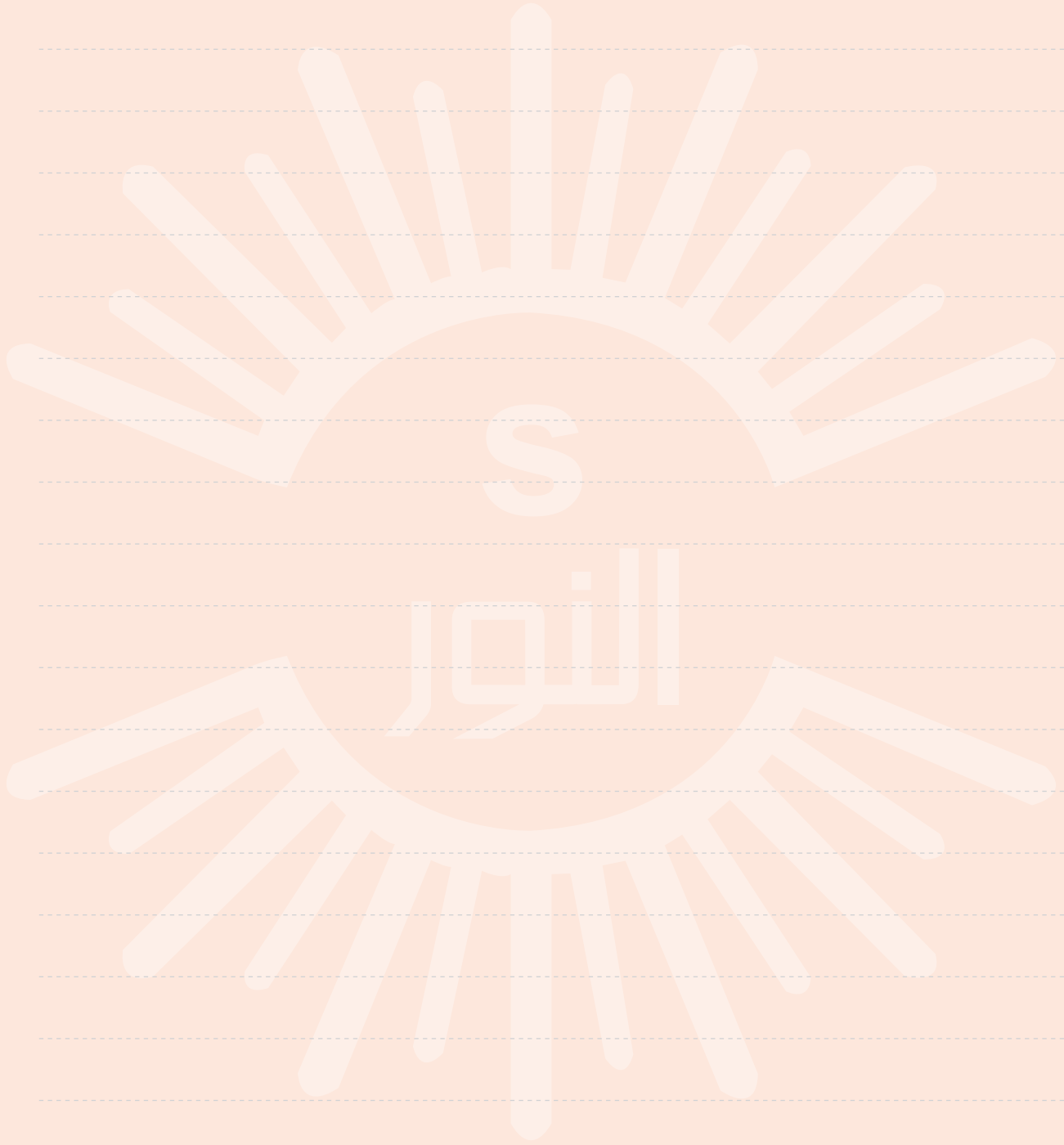


Drainage

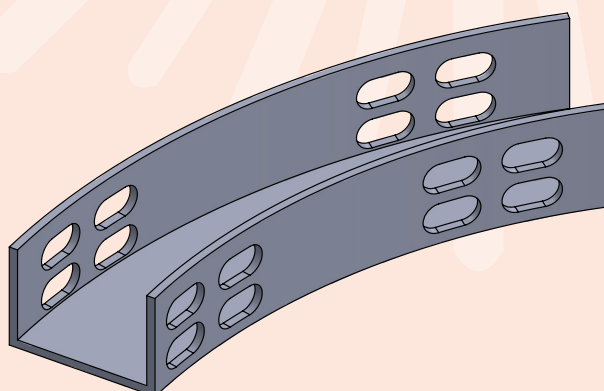
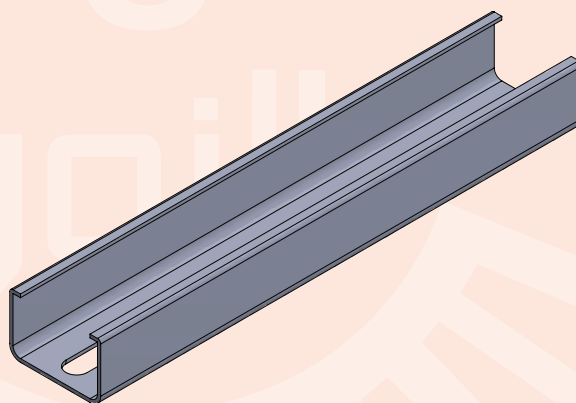
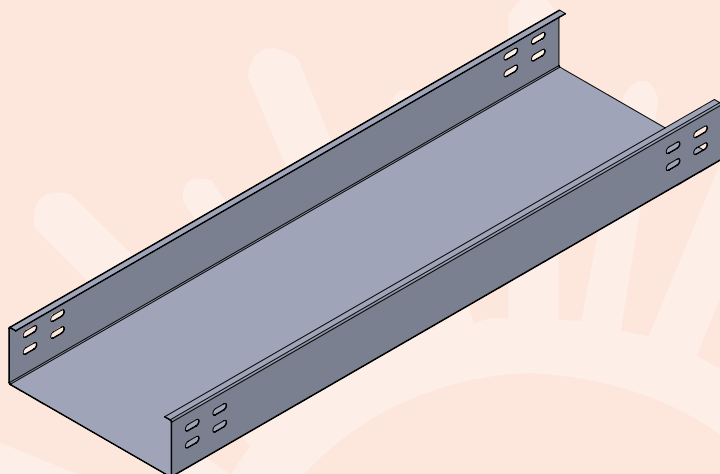


Trench Drain

Notes

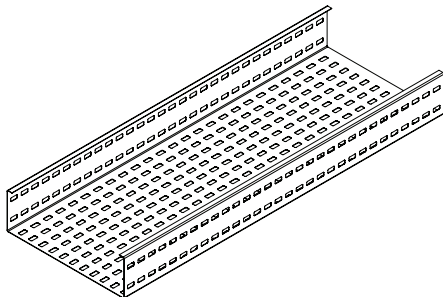


Cable Tray

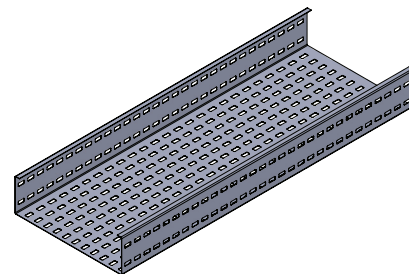




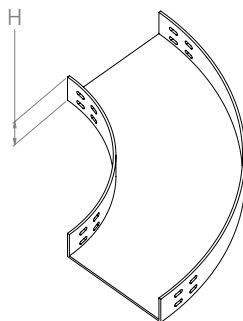
Standard Cable Tray Horizontal Bend 90 Connection



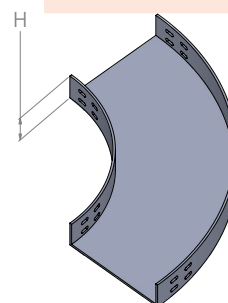
Material: Steel
Standard Finish: Electro-Plated or Hot-Dip Galvanized



Part No.	Width (mm)	Height (mm)	Thickness (mm)	Length (mm)	Cover
SC10110	50	-	-	-	
SC10110	100	-	-	-	
SC10110	150	25	1.0	-	
SC10110	200	50	1.25	2000	On request
SC10110	250	75	1.5	2500	1.25mm Thickness
SC10110	300	100	2.0	3000	2000mm Length
SC10110	400	-	-	-	
SC10110	450	-	-	-	
SC10110	600	-	-	-	



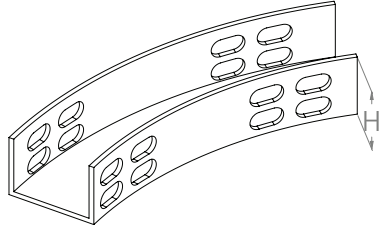
Material: Steel
Standard Finish: Electro-Plated or Hot-Dip Galvanized



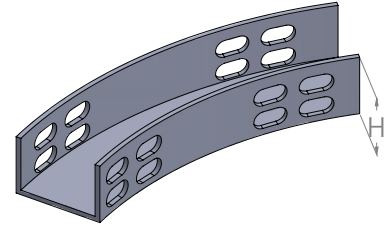
Part No.	Width (W1mm)	Width (W2mm)	Height (mm)	Length (mm)	Cover
SC10120	050	050	-	-	
SC10120	100	100	-	-	
SC10120	150	150	25	1.0	
SC10120	200	200	50	1.25	
SC10120	250	250	75	1.5	
SC10120	300	300	100	2.0	On request
SC10120	350	350	-	-	1.25mm Thickness
SC10120	400	400	-	-	
SC10120	450	450	-	-	
SC10120	500	500	-	-	
SC10120	600	600	-	-	



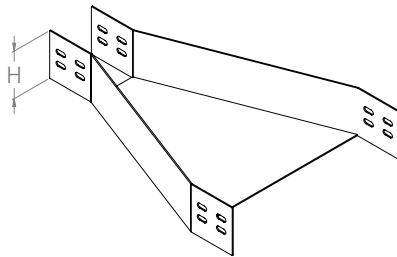
Horizontal Bend 45 Connection
Horizontal Reducer Connection



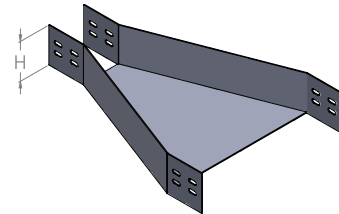
Material: Steel
Standard Finish: Electro-Plated or Hot-Dip Galvanized



Part No.	Width (W1mm)	Width (W2mm)	Height (Amm)	Thickness (mm)	Cover
SC10130	50	050	25	1.0	
SC10130	100	100	50	1.25	
SC10130	150	150	75	1.5	
SC10130	200	200	100	2.0	
SC10130	250	250	-	-	On request
SC10130	300	300	-	-	1.25mm Thickness
SC10130	400	400	-	-	
SC10130	450	450	-	-	
SC10130	500	500	-	-	
SC10130	600	600	-	-	



Material: Steel
Standard Finish: Electro-Plated

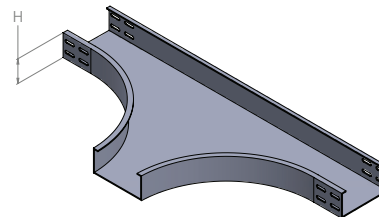
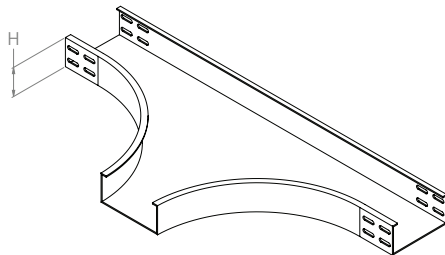


Part No.	Width (Wmm)	Width (W2mm)	Height (Amm)	Thickness (mm)	Reduce Dir.	Cover
SC10140	50	50	25	-		
SC10140	100	100	50	1.0		
SC10140	150	150	75	1.25	L	
SC10140	200	200	100	1.5	R	
SC10140	250	250	-	2.0	M	On request
SC10140	300	300	-	-		1.25mm Thickness
SC10140	400	400	-	-		
SC10140	450	450	-	-		
SC10140	500	500	-	-		
SC10140	600	600	-	-		

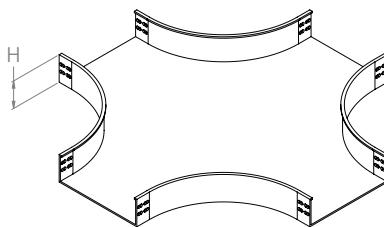


**Horizontal Tee Connection
Horizontal X Connection**

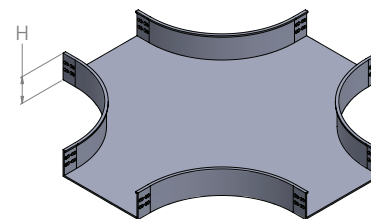
Material: Steel
Standard Finish: Electro-Plated or Hot-Dip Galvanized



Part No.	Width (W1mm)	Width (W2mm)	Width (W3mm)	Height (Amm)	Thickness (mm)	Cover
SC10150	50	050	050	-	-	
SC10150	100	100	100	-	-	
SC10150	150	150	150	25	1.5	
SC10150	200	200	200	50	1.25	
SC10150	250	250	250	75	1.5	On request
SC10150	300	300	300	100	2.0	1.25mmThickness
SC10150	400	400	400	-	-	
SC10150	450	450	450	-	-	
SC10150	500	500	500	-	-	
SC10150	600	600	600	-	-	



Material: Steel
Standard Finish: Electro-Plated

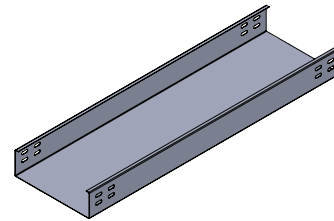
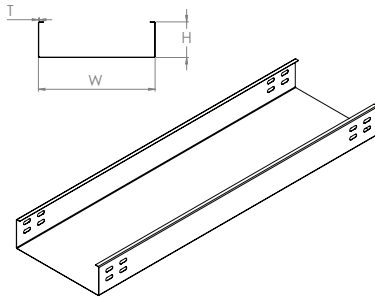


Part No.	Width (Wmm)	Width (W1mm)	Width (W3mm)	Width (W4mm)	Height (Amm)	Thickness (mm)	Cover
SC10160	50	50	50	50	-	-	
SC10160	100	100	100	100	-	-	
SC10160	150	150	150	150	25	1.5	
SC10160	200	200	200	200	50	1.25	
SC10160	250	250	250	250	75	1.5	On request
SC10160	300	300	300	300	100	2.0	1.25mmThickness
SC10160	400	400	400	400	-	-	
SC10160	450	450	450	450	-	-	
SC10160	500	500	500	500	-	-	
SC10160	600	600	60	60	-	-	

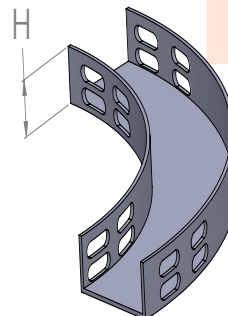
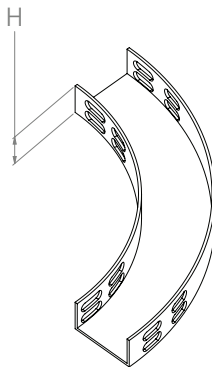


Trunk Dimenstion
Trunk Horizontal Bend 90 Connection

Material: Steel
Standard Finish: Electro-Plated or Hot-Dip Galvanized



Part No.	Width (W1mm)	Height (mm)	Length (Lmm)	Cover
SC10170	50	-	-	On request 1.25mm Thickness 2000mm Length
SC10170	100	-	-	
SC10170	150	1.0	-	
SC10170	200	1.25	2000	
SC10170	250	1.5	2500	
SC10170	300	2.0	3000	
SC10170	400	-	-	
SC10170	450	-	-	
SC10170	500	-	-	
SC10170	600	-	-	



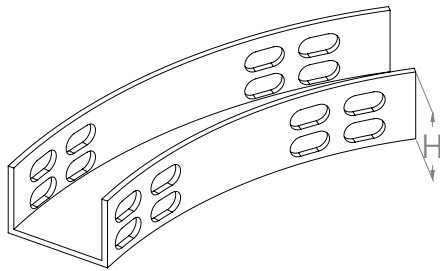
Material: Steel
Standard Finish: Electro-Plated

Part No.	Width (W1mm)	Width (W2mm)	Height (Amm)	Thickness (mm)	Cover
SC10180	50	50	-	-	On request 1.25mm Thickness
SC10180	100	100	-	-	
SC10180	150	150	25	1.0	
SC10180	200	200	50	1.25	
SC10180	250	250	75	1.5	
SC10180	300	300	100	2.0	
SC10180	400	400	-	-	
SC10180	450	450	-	-	
SC10180	500	500	-	-	
SC10180	600	600	-	-	

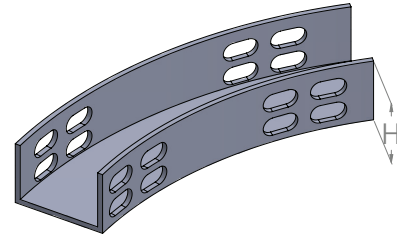
**Cable
Tray**



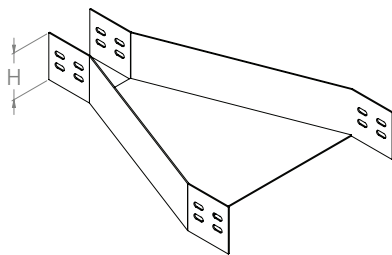
**Horizontal Bend 45 Connection
Horizontal Reducer Connection**



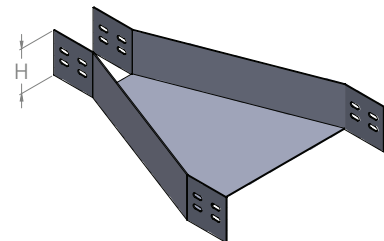
Material: Steel
Standard Finish: Electro-Plated or Hot-Dip Galvanized



Part No.	Width (W1mm)	Width (W2mm)	Height (Amm)	Thickness (mm)	Cover
SC10190	50	50	25	1.0	
SC10190	100	100	50	1.25	
SC10190	150	150	75	1.5	
SC10190	200	200	100	2.0	
SC10190	250	250	-	-	On request
SC10190	300	300	-	-	1.25mm Thickness
SC10190	400	400	-	-	
SC10190	450	450	-	-	
SC10190	500	500	-	-	
SC10190	600	600	-	-	



Material: Steel
Standard Finish: Electro-Plated

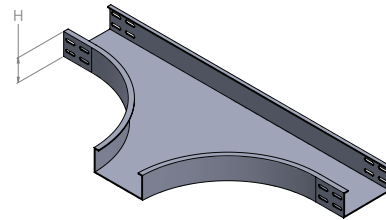
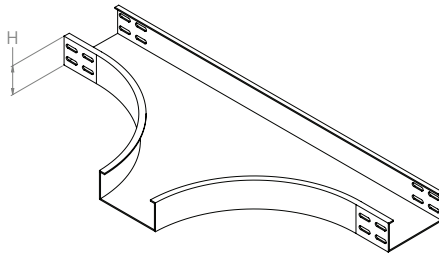


Part No.	Width (Wmm)	Width (W2mm)	Height (Amm)	Thickness (mm)	Reduce Dir.	Cover
SC10200	50	50	25	-		
SC10200	100	100	50	1.0		
SC10200	150	150	75	1.25	L	
SC10200	200	200	100	1.5	R	
SC10200	250	250	-	2.0	M	On request
SC10200	300	300	-	-		1.25mm Thickness
SC10200	400	400	-	-		
SC10200	450	450	-	-		
SC10200	500	500	-	-		
SC10200	600	-	-	-		



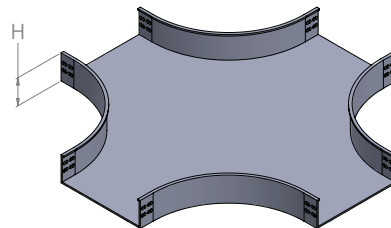
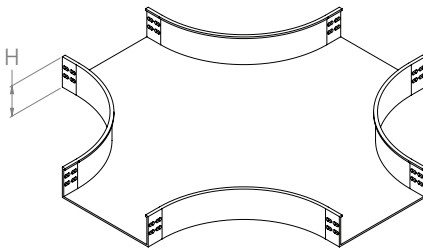
Trunk Horizontal Tee Connection
Trunk Horizontal X Connection

Material: Steel
Standard Finish: Electro-Plated or Hot-Dip Galvanized



Part No.	Width (W1mm)	Width (W2mm)	Height (Amm)	Thickness (mm)	Cover
SC10210	50	50	-	-	On request 1.25mmThickness
SC10210	100	100	-	-	
SC10210	150	150	25	1.5	
SC10210	200	200	50	1.25	
SC10210	250	250	75	1.5	
SC10210	300	300	100	2.0	
SC10210	400	400	-	-	
SC10210	450	450	-	-	
SC10210	500	500	-	-	
SC10210	600	600	-	-	

Material: Steel
Standard Finish: Electro-Plated

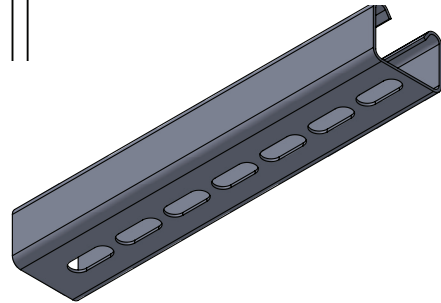
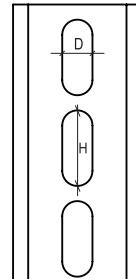
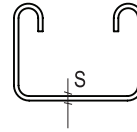
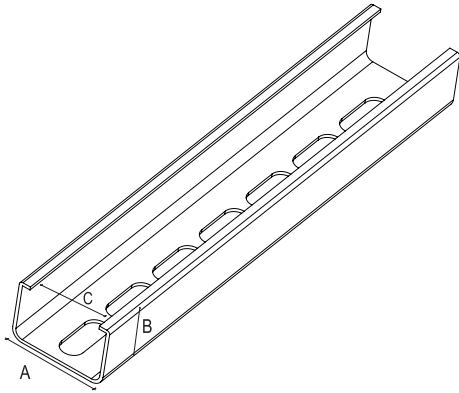


Part No.	Width (Wmm)	Width (W2mm)	Width (W3mm)	Width (W4mm)	Height (Amm)	Thickness (mm)	Cover
SC10220	50	50	50	50	-	-	On request 1.25mmThickness
SC10220	100	100	100	100	-	-	
SC10220	150	150	150	150	25	1.5	
SC10220	200	200	200	200	50	1.25	
SC10220	250	250	250	250	75	1.5	
SC10220	300	300	300	300	100	2.0	
SC10220	400	400	400	400	-	-	
SC10220	450	450	450	450	-	-	
SC10220	500	500	500	500	-	-	
SC10220	600	600	600	60	-	-	



C-Channel

Material: Steel
Standard Finish: Electro-Plated or Hot-Dip Galvanized



Part No.	"A" (mm)	"B" (mm)	"C" (mm)	"D" (mm)	"H" (mm)	Thickness "S" (mm)
SC10230	30	20	20	12	27	1.5
SC10230	40	20	20	12	27	1.5
SC10230	50	20	20	12	27	1.5
SC10230	30	30	20	12	27	1.5
SC10230	40	40	25	12	27	1.5
SC10230	50	50	25	12	27	1.5

Part No.	"A"(mm)	"B" (mm)	"C" (mm)	"D" (mm)	"H" (mm)	Thickness "S" (mm)
SC10240	30	20	20	12	27	2
SC10240	40	20	20	12	27	2
SC10240	50	20	20	12	27	2
SC10240	30	30	20	12	27	2
SC10240	40	40	25	12	27	2
SC10220	50	50	25	12	27	2

Lights



Usage:

In road lighting- Squares - Bridges - Reflective.



Fields:

From pure aluminum and manufactured using the process of deep cloudsIt is supported to ensure that you get a homogeneous lighting on the road surface.

Distributor:

Transparent aperitif panels that allow high permeability of light with high capacity to withstand natural and industrial lighting and temperatures without changing color or over time.

Distributor installation:

Fastened using three stainless steel dogs and governed with the unit by a sealant and resistant to moisture and dust to maintain the interior parts of the unit.

Electric Component Holder:

Is the back of the unit of injected aluminum and is used to install pallet electrical components and also to install the unit with the mounting poles.

Electrical Connection:

According to the required specifications

The Detector:

It is horizontally fixed on any mm diameter column.

Maintenance:

Changing the bulb by Open the Electrical parts byOpen the pallet ingredients.



الاستخدام:

فى اضاءة الطرق - الساحات - الكبارى - الميادين.

العاكس:

من الالمونيوم النقى والمصنع باستخدام عملية السحب العميق والمؤنود لضمان الحصول على اضاءة متجانسة على سطح الطريق.

البوزع:

من ألواح الأكليريك الشفاف الذى يسمح بنفاذية عالية للضوء مع قدرة عالية لتحمل الاضاءة الطبيعية والصناعية ودرجات الحرارة دون تغيير فى اللون او الشكل مع مرور الوقت.

تثبيت البوزع:

يثبت باستخدام ثلاث كلبسات من الصلب المقاوم للصدأ ويحكم مع الوحدة بمانع تسرب مقاوم للرطوبة والأتربة للحفاظ على الأجزاء الداخلية.

حامل المكونات الكهربائية:

هو الجزء الخلفى للوحدة من الالمونيوم المحقون ويستخدم لتثبيت بالته الكهربائية وايضا لتثبيت الوحدة مع اعمدة التثبيت.

التوصيلات الكهربائية:

على حسب المواصفات المطلوبة.

تثبيت الكنتناف:

يثبت أفقياً على أى أعمدة قطرها ٤٢-٦٠ مم.

الصيانة:

تتغير لللمبة عن طريق فتح الكلبسات.
الأجزاء الكهربائية عن طريق فتح بالته المكونات



الهولدي: 400-250-125